

LPHN3 antibody



Catalog Number: 112303

Product name

LPHN3 antibody

Specificity

Human, Mouse, Rat; other species not tested.

Antibody description

LPHN3 Rabbit Polyclonal antibody. Positive FC detected in HepG2 cells. Positive WB detected in mouse brain tissue, COLO 320 cells, HepG2 cells, human liver tissue, mouse colon tissue. Positive IP detected in mouse brain tissue. Observed molecular weight by Western-blot: 139 kDa

Preparation

This antibody was obtained by immunization of Peptide (Accession Number: NM_015236). Purification method: Antigen affinity purified.

Formulation

PBS with 0.02% sodium azide and 50% glycerol pH 7.3.

Storage

Store at -20°C. DO NOT ALIQUOT

Clonality

Polyclonal

Ig Type

Rabbit IgG

Applications

ELISA, WB, IP, FC

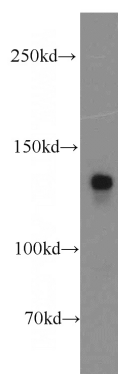
Dilutions

Recommended Dilution:

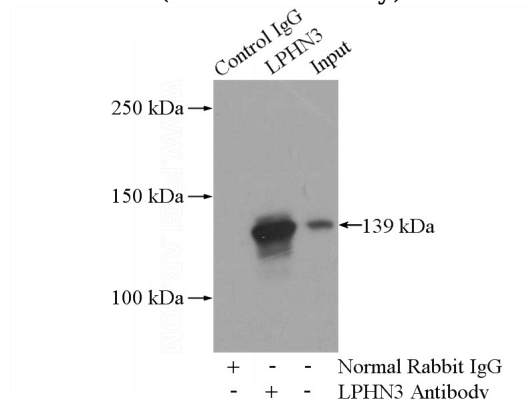
WB: 1:500-1:5000

IP: 1:200-1:1000

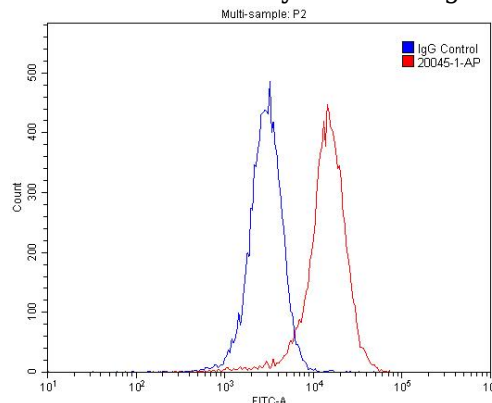
Validations



mouse brain tissue were subjected to SDS PAGE followed by western blot with Catalog No:112303(LPHN3 antibody) at dilution of 1:300



IP Result of anti-LPHN3 (IP:Catalog No:112303, 4ug; Detection:Catalog No:112303 1:300) with mouse brain tissue lysate 4000ug.



1X10⁶ HepG2 cells were stained with .2ug LPHN3 antibody (Catalog No:112303, red) and control antibody (blue). Fixed with 4% PFA

LPHN3 antibody



Catalog Number: 112303

blocked with 3% BSA (30 min). Alexa Fluor 488-

conjugated AffiniPure Goat Anti-Rabbit IgG(H+L)
with dilution 1:1500.