

LOX antibody

Catalog Number: 112298

Product name

LOX antibody

Recommended Dilution:

WB: 1:200-1:2000

Specificity

Human, Mouse; other species not tested.

IP: 1:200-1:2000

IHC: 1:20-1:200

Antibody description

LOX Rabbit Polyclonal antibody. Positive IHC detected in human placenta tissue, human heart tissue, human skin tissue, human stomach cancer tissue. Positive IP detected in mouse skeletal muscle tissue. Positive WB detected in Jurkat cells, A375 cells, MKN-45 cells, mouse skeletal muscle tissue, NIH/3T3 cells, SGC-7901 cells. Observed molecular weight by Western-blot: 32kd or 45-47kd

Validations



Preparation

This antibody was obtained by immunization of LOX recombinant protein (Accession Number: NM_002317). Purification method: Antigen affinity purified.

Jurkat cells were subjected to SDS PAGE followed by western blot with Catalog No:112298(LOX antibody) at dilution of 1:600

Formulation

PBS with 0.02% sodium azide and 50% glycerol pH 7.3.

Storage

Store at -20°C. DO NOT ALIQUOT

Clonality

Polyclonal

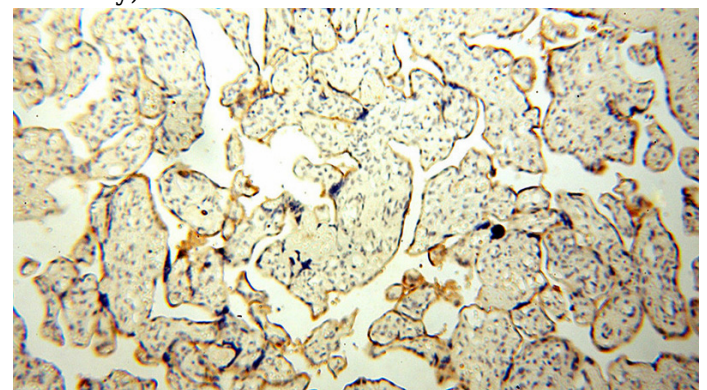
Ig Type

Rabbit IgG

Applications

ELISA, WB, IHC, IP

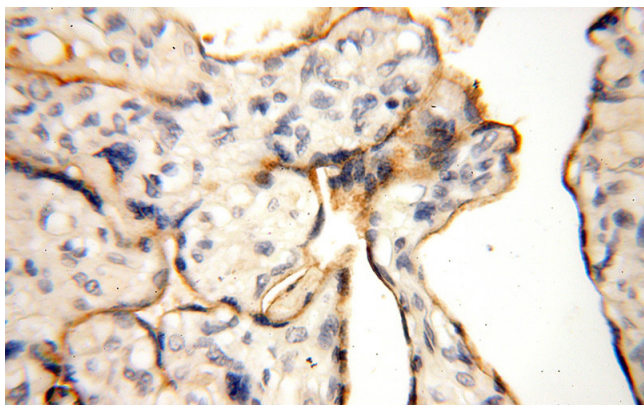
Dilutions



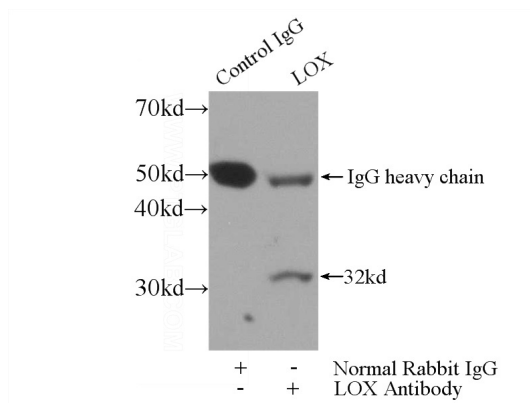
Immunohistochemical of paraffin-embedded human placenta using Catalog No:112298(LOX antibody) at dilution of 1:100 (under 10x lens)

LOX antibody

Catalog Number: 112298



Immunohistochemical of paraffin-embedded human placenta using Catalog No:112298(LOX antibody) at dilution of 1:100 (under 40x lens)



IP Result of anti-LOX (IP:Catalog No:112298, 3ug; Detection:Catalog No:112298 1:500) with mouse skeletal muscle tissue lysate 2000ug.