

# Loricrin antibody

Catalog Number: 112297

## Product name

Loricrin antibody

IF: 1:10-1:100

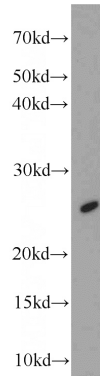
## Specificity

Human, Mouse; other species not tested.

## Validations

## Antibody description

Loricrin Rabbit Polyclonal antibody. Positive WB detected in A431 cells. Positive IF detected in A431 cells. Positive IHC detected in human skin tissue, human skin cancer tissue. Observed molecular weight by Western-blot: 26 kDa



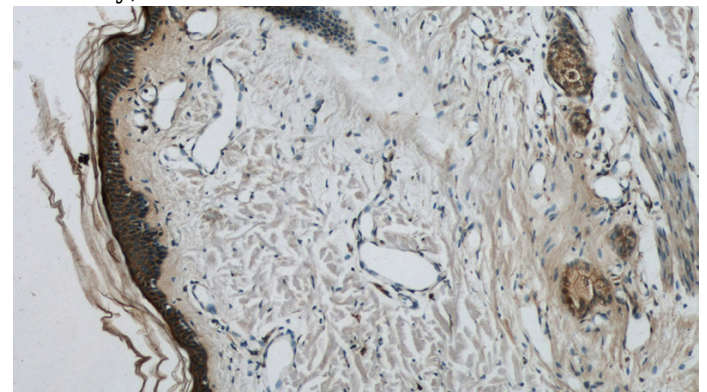
## Preparation

This antibody was obtained by immunization of Peptide (Accession Number: NM\_000427). Purification method: Antigen affinity purified.

A431 cells were subjected to SDS PAGE followed by western blot with Catalog No:112297(LOR antibody) at dilution of 1:500

## Formulation

PBS with 0.02% sodium azide and 50% glycerol pH 7.3.



## Storage

Store at -20°C. DO NOT ALIQUOT

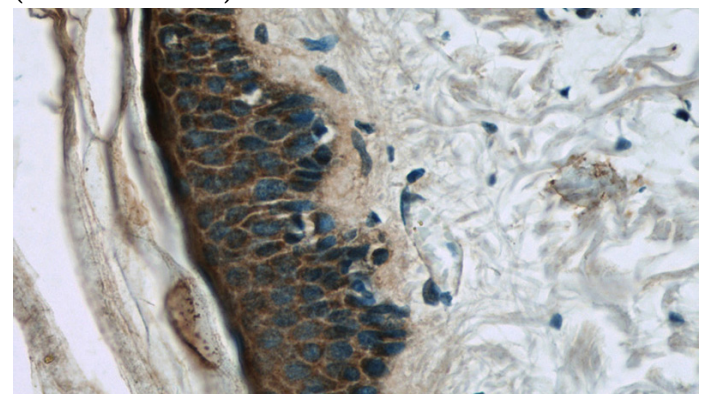
## Clonality

Polyclonal

Immunohistochemistry of paraffin-embedded human skin tissue slide using Catalog No:112297(LOR Antibody) at dilution of 1:50 (under 10x lens)

## Ig Type

Rabbit IgG



## Applications

ELISA, WB, IHC, IF

## Dilutions

Recommended Dilution:

WB: 1:200-1:2000

IHC: 1:20-1:200

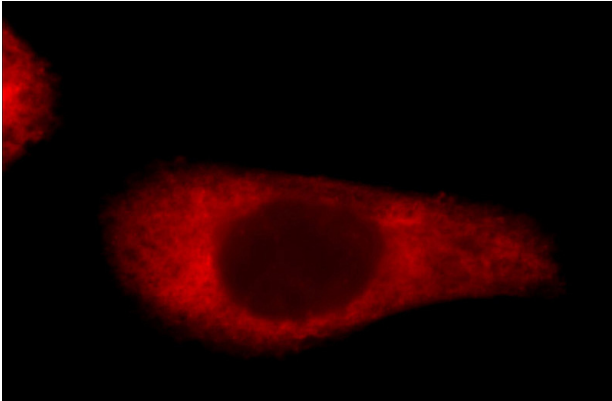
Immunohistochemistry of paraffin-embedded human skin tissue slide using Catalog No:112297(LOR Antibody) at dilution of 1:50

# Loricrin antibody

Catalog Number: 112297

---

(under 40x lens)



Immunofluorescent analysis of A431 cells using Catalog No:112297(LOR Antibody) at dilution of 1:25 and Rhodamine-Goat anti-Rabbit IgG