

LOH12CR1 antibody



Catalog Number: 112294

Product name

LOH12CR1 antibody

Specificity

Human, Mouse, Rat; other species not tested.

Antibody description

LOH12CR1 Rabbit Polyclonal antibody. Positive WB detected in Transfected HEK-293 cells.

Preparation

This antibody was obtained by immunization of LOH12CR1 recombinant protein (Accession Number: NM_058169). Purification method: Antigen affinity purified.

Formulation

PBS with 0.02% sodium azide and 50% glycerol pH 7.3.

Storage

Store at -20°C. DO NOT ALIQUOT

Clonality

Polyclonal

Ig Type

Rabbit IgG

Applications

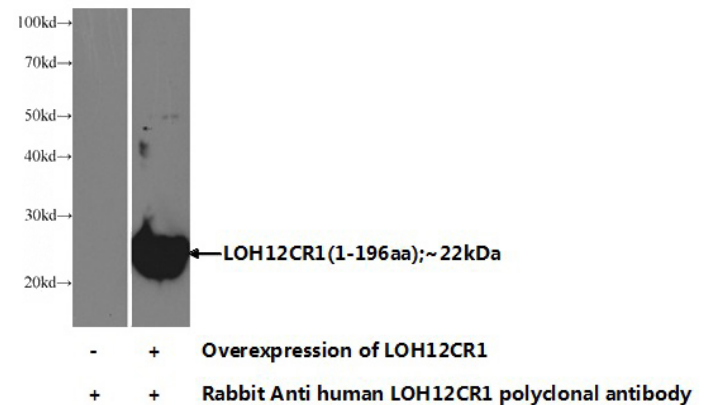
ELISA, WB

Dilutions

Recommended Dilution:

WB: 1:500-1:5000

Validations



Transfected HEK-293 cells were subjected to SDS PAGE followed by western blot with Catalog No:112294(LOH12CR1 Antibody) at dilution of 1:1000