

# LMX1B antibody



Catalog Number: 112288

## Product name

LMX1B antibody

## Specificity

Human, Mouse, Rat; other species not tested.

## Antibody description

LMX1B Rabbit Polyclonal antibody. Positive IF detected in embryonic kidney tissue. Positive WB detected in HeLa cells. Observed molecular weight by Western-blot: 42 kDa

## Preparation

This antibody was obtained by immunization of LMX1B recombinant protein (Accession Number: BC112120). Purification method: Antigen affinity purified.

## Formulation

PBS with 0.1% sodium azide and 50% glycerol pH 7.3.

## Storage

Store at -20°C. DO NOT ALIQUOT

## Clonality

Polyclonal

## Ig Type

Rabbit IgG

## Applications

ELISA, WB, IF

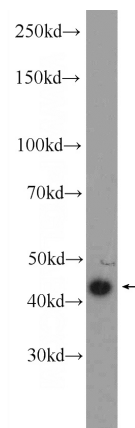
## Dilutions

Recommended Dilution:

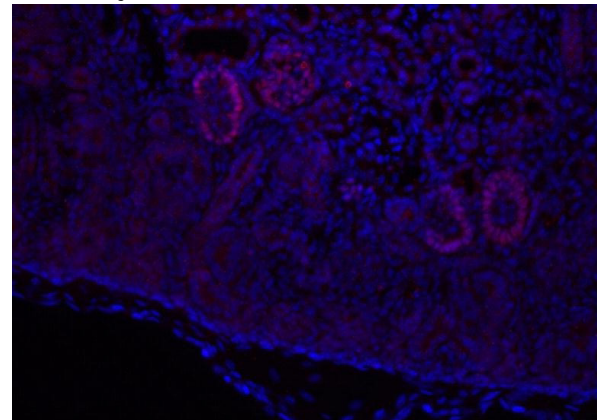
WB: 1:200-1:2000

IF: 1:20-1:200

## Validations



HeLa cells were subjected to SDS PAGE followed by western blot with Catalog No:112288(LMX1B Antibody) at dilution of 1:600



IF result of anti-LMX1B(Catalog No:112288 ,1:900) with embryonic kidney by Dr. Joo-Seop Park. Red: Podocytes, anti-rabbit Alexa555; Blue: Hoechst.