

LMP7 antibody

Catalog Number: 112287

Product name

LMP7 antibody

Immunogen

Specificity

Human, Mouse; other species not tested.

Antibody description

LMP7 Rabbit Polyclonal antibody. Positive IF detected in HepG2 cells. Positive IHC detected in human lymphoma tissue. Positive FC detected in HepG2 cells. Positive WB detected in mouse kidney tissue, human kidney tissue, Jurkat cells, Raji cells. Positive IP detected in Raji cells. Observed molecular weight by Western-blot: 22 kDa

Preparation

This antibody was obtained by immunization of LMP7 recombinant protein (Accession Number: NM_004159). Purification method: Antigen affinity purified.

Formulation

PBS with 0.02% sodium azide and 50% glycerol pH 7.3.

Storage

Store at -20°C. DO NOT ALIQUOT

Clonality

Polyclonal

Ig Type

Rabbit IgG

Applications

ELISA, WB, IHC, IF, FC, IP

Dilutions

Recommended Dilution:

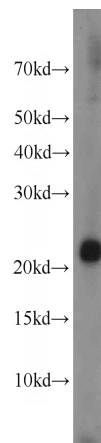
WB: 1:500-1:5000

IP: 1:500-1:5000

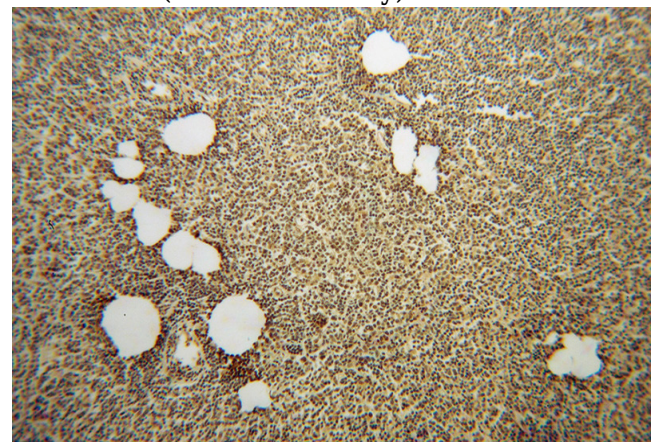
IHC: 1:20-1:200

IF: 1:20-1:200

Validations



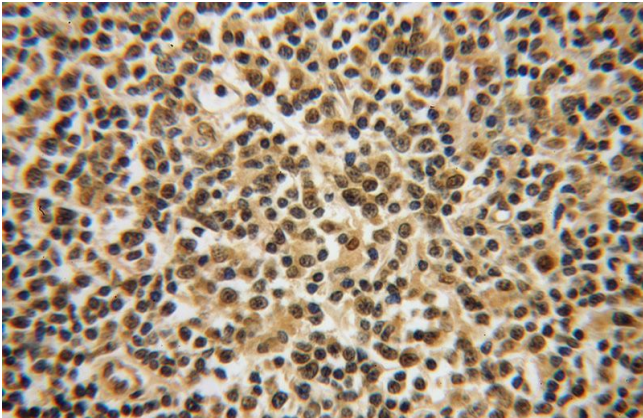
mouse kidney tissue were subjected to SDS PAGE followed by western blot with Catalog No:112287(PSMB8 antibody) at dilution of 1:1000



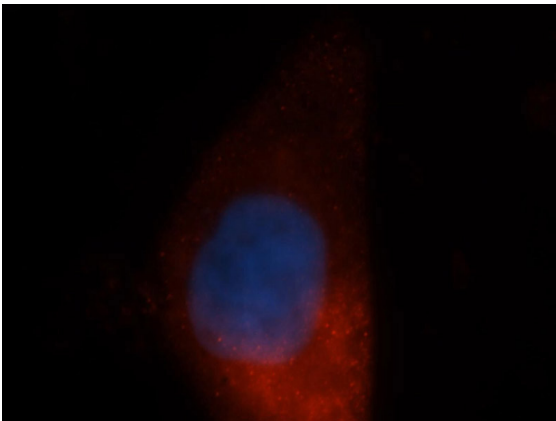
Immunohistochemical of paraffin-embedded human lymphoma using Catalog No:112287(PSMB8 antibody) at dilution of 1:50 (under 10x lens)

LMP7 antibody

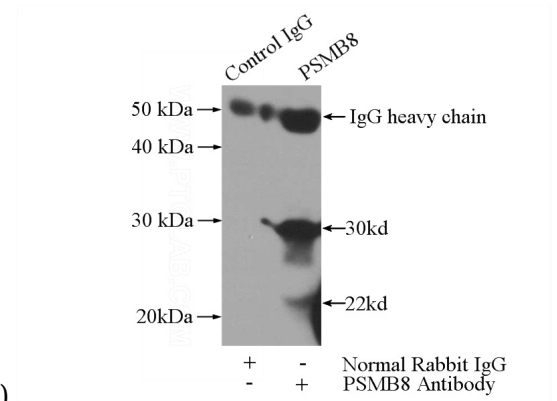
Catalog Number: 112287



Immunohistochemical of paraffin-embedded human lymphoma using Catalog No:112287(PSMB8 antibody) at dilution of 1:50 (under 40x lens)

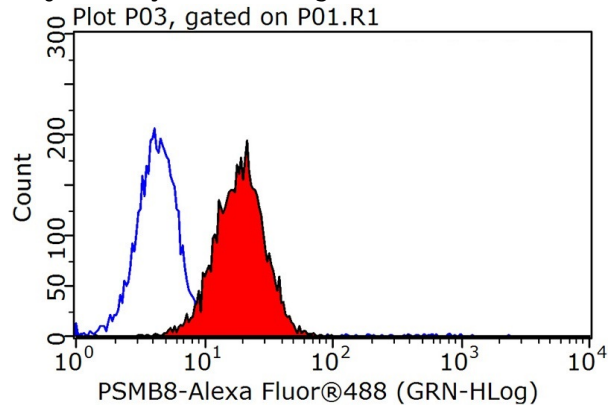


Immunofluorescent analysis of HepG2 cells, using PSMB8 antibody Catalog No:112287 at 1:50 dilution and Rhodamine-labeled goat anti-rabbit IgG (red). Blue pseudocolor = DAPI (fluorescent



DNA dye).

IP Result of anti-PSMB8 (IP:Catalog No:112287, 3ug; Detection:Catalog No:112287 1:1000) with Raji cells lysate 2800ug.



1X10⁶ HepG2 cells were stained with 0.2ug PSMB8 antibody (Catalog No:112287, red) and control antibody (blue). Fixed with 90% MeOH blocked with 3% BSA (30 min). Alexa Fluor 488-conjugated AffiniPure Goat Anti-Rabbit IgG(H+L) with dilution 1:1500.