

LMP2 antibody

Catalog Number: 112286

Product name

LMP2 antibody

Immunogen

Specificity

Human, Mouse, Rat; other species not tested.

Antibody description

LMP2 Rabbit Polyclonal antibody. Positive IP detected in Raji cells. Positive WB detected in Raji cells, HepG2 cells, rat spleen tissue. Positive IF detected in HepG2 cells. Positive IHC detected in human lymphoma tissue, human tonsillitis tissue. Observed molecular weight by Western-blot: 21-23 kDa

Preparation

This antibody was obtained by immunization of LMP2 recombinant protein (Accession Number: NM_002800). Purification method: Antigen affinity purified.

Formulation

PBS with 0.02% sodium azide and 50% glycerol pH 7.3.

Storage

Store at -20°C. DO NOT ALIQUOT

Clonality

Polyclonal

Ig Type

Rabbit IgG

Applications

ELISA, WB, IHC, IP, IF

Dilutions

Recommended Dilution:

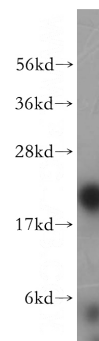
WB: 1:200-1:2000

IP: 1:200-1:1000

IHC: 1:20-1:200

IF: 1:50-1:500

Validations



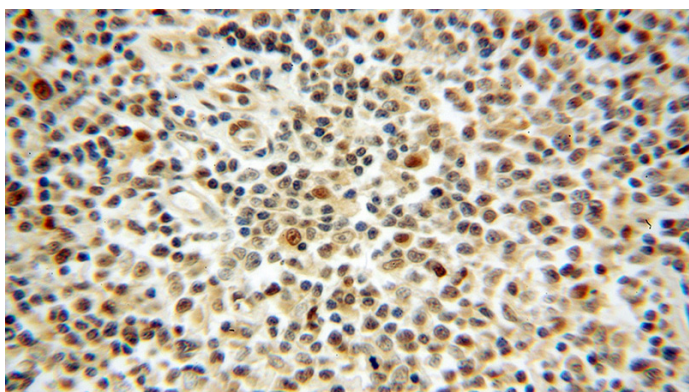
Raji cells were subjected to SDS PAGE followed by western blot with Catalog No:112286(PSMB9 antibody) at dilution of 1:400



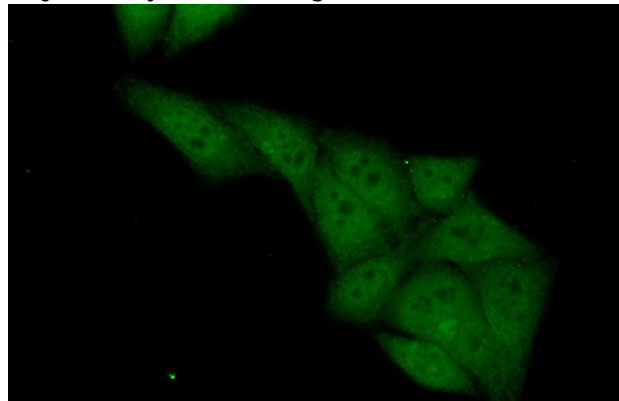
Immunohistochemical of paraffin-embedded human lymphoma using Catalog No:112286(PSMB9 antibody) at dilution of 1:50 (under 10x lens)

LMP2 antibody

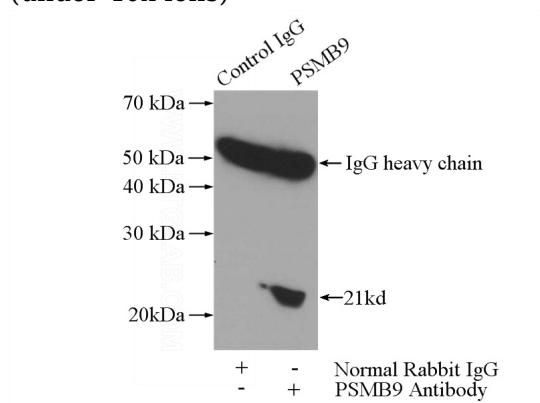
Catalog Number: 112286



IP Result of anti-PSMB9 (IP:Catalog No:112286, 4ug; Detection:Catalog No:112286 1:300) with Raji cells lysate 2800ug.



Immunohistochemical of paraffin-embedded human lymphoma using Catalog No:112286(PSMB9 antibody) at dilution of 1:50 (under 40x lens)



Immunofluorescent analysis of (10% Formaldehyde) fixed HepG2 cells using Catalog No:112286(PSMB9 Antibody) at dilution of 1:50 and Alexa Fluor 488-conjugated AffiniPure Goat Anti-Rabbit IgG(H+L)