

# LMOD1 antibody



Catalog Number: 112284

## Product name

LMOD1 antibody

Recommended Dilution:

WB: 1:200-1:2000

## Specificity

Human, Mouse, Rat; other species not tested.

IP: 1:200-1:2000

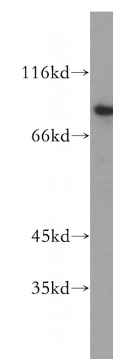
IHC: 1:20-1:200

## Antibody description

LMOD1 Rabbit Polyclonal antibody. Positive IHC detected in human ovary tumor tissue. Positive IF detected in A375 cells. Positive IP detected in mouse skeletal muscle tissue. Positive WB detected in human skeletal muscle tissue, HeLa cells, mouse bladder tissue, mouse skeletal muscle tissue, mouse uterus tissue. Observed molecular weight by Western-blot: 85kd or 64kd

IF: 1:10-1:100

## Validations



## Preparation

This antibody was obtained by immunization of LMOD1 recombinant protein (Accession Number: BC001755). Purification method: Antigen affinity purified.

human skeletal muscle tissue were subjected to SDS PAGE followed by western blot with Catalog No:112284(LMOD1 antibody) at dilution of 1:300

## Formulation

PBS with 0.02% sodium azide and 50% glycerol pH 7.3.

## Storage

Store at -20°C. DO NOT ALIQUOT

## Clonality

Polyclonal

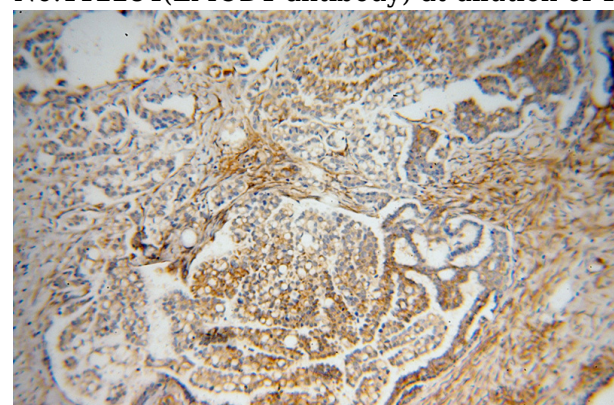
## Ig Type

Rabbit IgG

## Applications

ELISA, WB, IHC, IF, IP

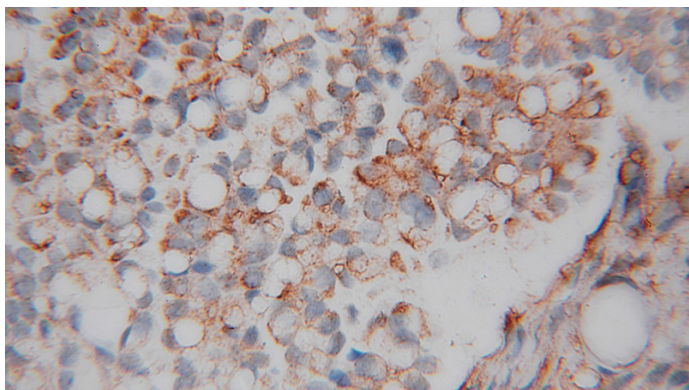
## Dilutions



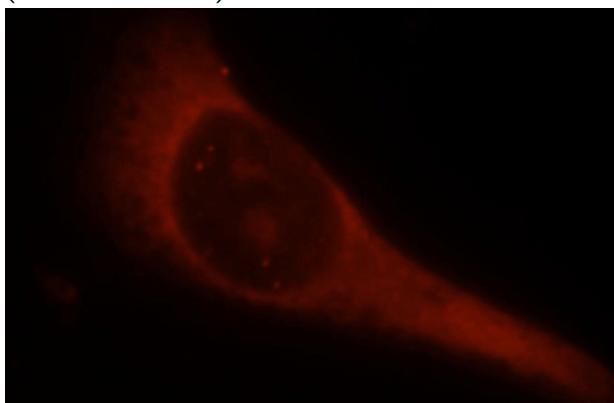
Immunohistochemical of paraffin-embedded human ovary tumor using Catalog No:112284(LMOD1 antibody) at dilution of 1:50 (under 10x lens)

# LMOD1 antibody

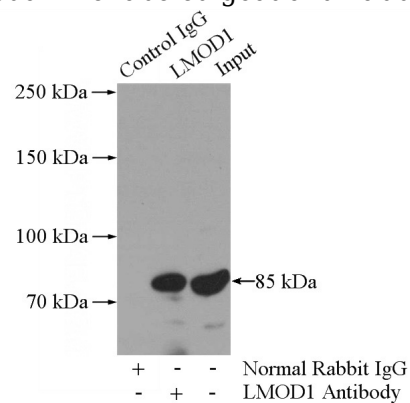
Catalog Number: 112284



Immunohistochemical of paraffin-embedded human ovary tumor using Catalog No:112284(LMOD1 antibody) at dilution of 1:50 (under 40x lens)



Immunofluorescent analysis of A375 cells, using LMOD1 antibody Catalog No:112284 at 1:25 dilution and Rhodamine-labeled goat anti-rabbit



IgG (red).

IP Result of anti-LMOD1 (IP:Catalog No:112284, 4ug; Detection:Catalog No:112284 1:700) with mouse skeletal muscle tissue lysate 3600ug.