

LMNB2 antibody



Catalog Number: 112282

Product name

LMNB2 antibody

Recommended Dilution:

WB: 1:1000-1:10000

Specificity

Human, Mouse, Rat; other species not tested.

IP: 1:200-1:2000

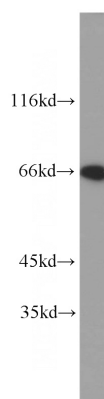
IHC: 1:20-1:200

Antibody description

LMNB2 Rabbit Polyclonal antibody. Positive FC detected in HEK-293T cells. Positive IF detected in HepG2 cells, SH-SY5Y cells. Positive IHC detected in human colon cancer tissue. Positive IP detected in Jurkat cells. Positive WB detected in Jurkat cells, BxPC-3 cells, HEK-293 cells, HeLa cells, HL-60 cells, MCF7 cells, mouse brain tissue. Observed molecular weight by Western-blot: 66-68kd

IF: 1:10-1:100

Validations



Jurkat cells were subjected to SDS PAGE followed by western blot with Catalog No:112282(LMNB2 antibody) at dilution of 1:2000

Preparation

This antibody was obtained by immunization of LMNB2 recombinant protein (Accession Number: BC006551). Purification method: Antigen affinity purified.

Formulation

PBS with 0.1% sodium azide and 50% glycerol pH 7.3.

Storage

Store at -20°C. DO NOT ALIQUOT

Clonality

Polyclonal

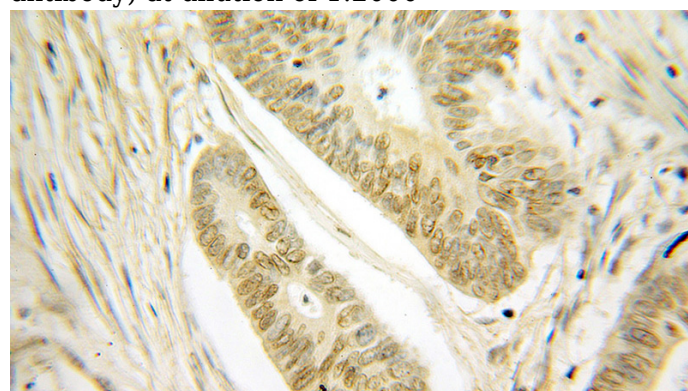
Ig Type

Rabbit IgG

Applications

ELISA, WB, IHC, IF, FC, IP

Dilutions

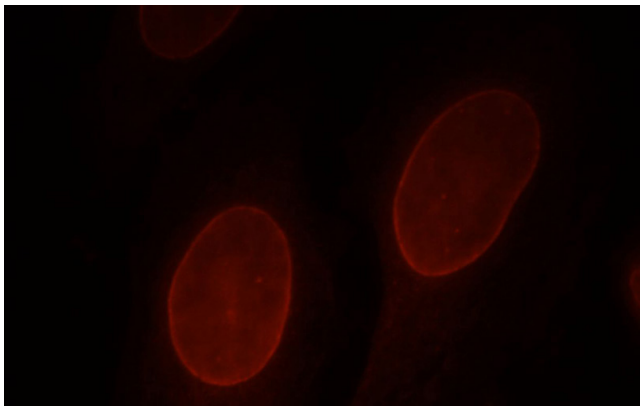


Immunohistochemical of paraffin-embedded human colon cancer using Catalog No:112282(LMNB2 antibody) at dilution of 1:100 (under 10x lens)

LMNB2 antibody

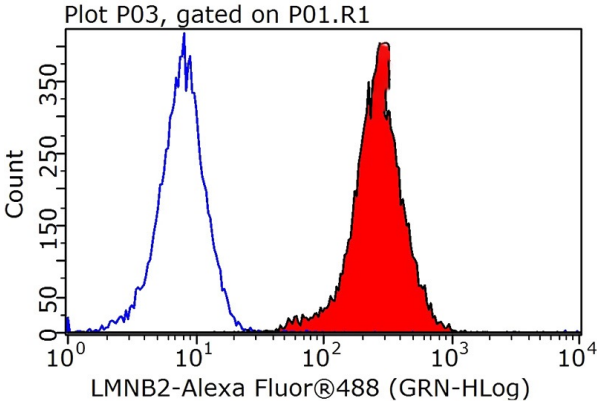


Catalog Number: 112282

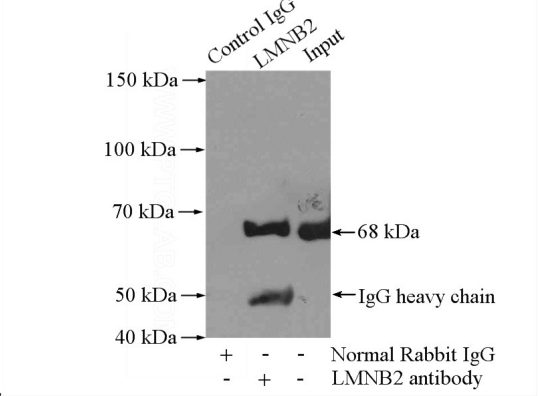


Immunofluorescent analysis of HepG2 cells, using LMNB2 antibody Catalog No:112282 at 1:25 dilution and Rhodamine-labeled goat anti-rabbit

IP Result of anti-LMNB2 (IP:Catalog No:112282, 3ug; Detection:Catalog No:112282 1:500) with Jurkat cells lysate 2400ug.



1X10⁶ HEK-293T cells were stained with 0.2ug LMNB2 antibody (Catalog No:112282, red) and control antibody (blue). Fixed with 90% MeOH blocked with 3% BSA (30 min). Alexa Fluor 488-conjugated AffiniPure Goat Anti-Rabbit IgG(H+L) with dilution 1:1000.



IgG (red).