

LMF2 antibody

Catalog Number: 112281

Product name

LMF2 antibody

IHC: 1:20-1:200

IF: 1:10-1:100

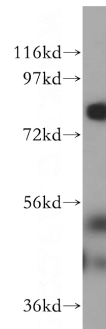
Specificity

Human, Mouse, Rat; other species not tested.

Antibody description

LMF2 Rabbit Polyclonal antibody. Positive WB detected in HeLa cells, human brain tissue. Positive IHC detected in human kidney tissue. Positive IF detected in MCF-7 cells. Observed molecular weight by Western-blot: 80kd

Validations



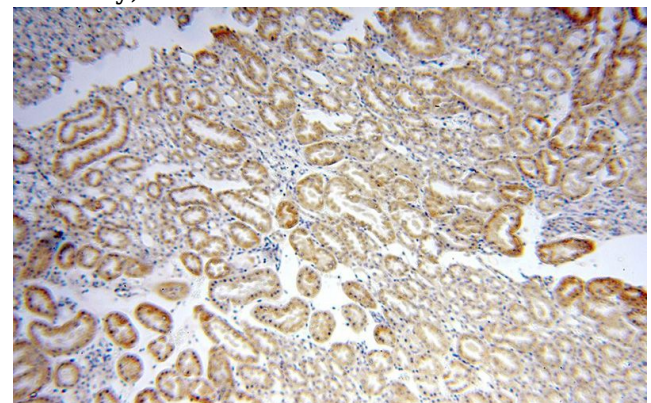
Preparation

This antibody was obtained by immunization of LMF2 recombinant protein (Accession Number: NM_001363816). Purification method: Antigen affinity purified.

HeLa cells were subjected to SDS PAGE followed by western blot with Catalog No:112281(LMF2 antibody) at dilution of 1:800

Formulation

PBS with 0.02% sodium azide and 50% glycerol pH 7.3.



Storage

Store at -20°C. DO NOT ALIQUOT

Clonality

Polyclonal

Ig Type

Rabbit IgG

Applications

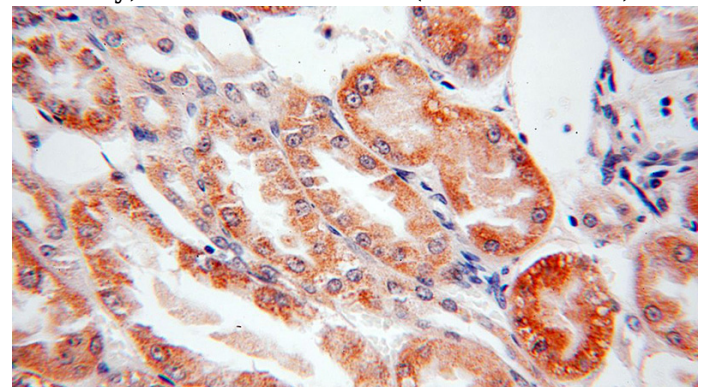
ELISA, WB, IHC, IF

Dilutions

Recommended Dilution:

WB: 1:1000-1:10000

Immunohistochemical of paraffin-embedded human kidney using Catalog No:112281(LMF2 antibody) at dilution of 1:100 (under 10x lens)

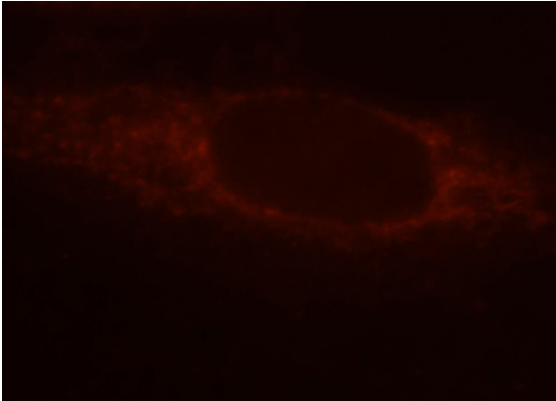


Immunohistochemical of paraffin-embedded human kidney using Catalog No:112281(LMF2 antibody) at dilution of 1:100 (under 10x lens)

LMF2 antibody

Catalog Number: 112281

antibody) at dilution of 1:100 (under 40x lens)



Immunofluorescent analysis of MCF-7 cells, using Catalog No:112281 and Rhodamine-labeled goat anti-rabbit IgG (red).