

Product name

KYNU antibody

IHC: 1:20-1:200

IF: 1:10-1:100

Specificity

Human, Mouse, Rat; other species not tested.

Antibody description

KYNU Rabbit Polyclonal antibody. Positive WB detected in HeLa cells. Positive IF detected in HepG2 cells. Positive IHC detected in human ovary tumor tissue. Observed molecular weight by Western-blot: 52kd

Preparation

This antibody was obtained by immunization of KYNU recombinant protein (Accession Number: XM_047446252). Purification method: Antigen affinity purified.

Formulation

PBS with 0.1% sodium azide and 50% glycerol pH 7.3.

Storage

Store at -20°C. DO NOT ALIQUOT

Clonality

Polyclonal

Ig Type

Rabbit IgG

Applications

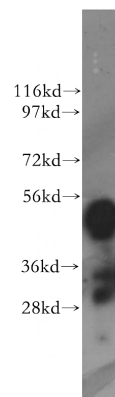
ELISA, WB, IHC, IF

Dilutions

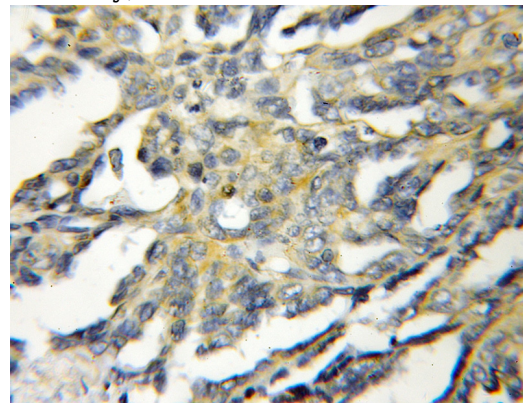
Recommended Dilution:

WB: 1:1000-1:10000

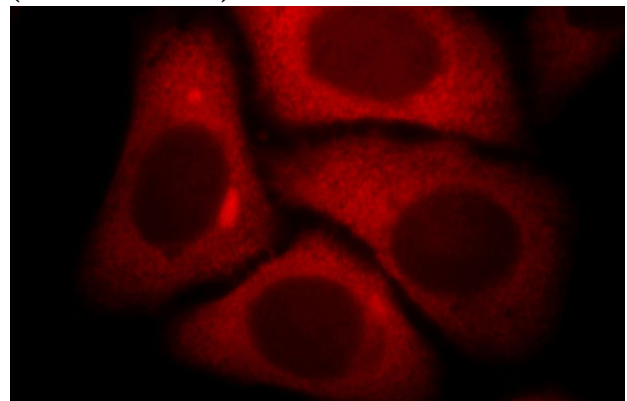
Validations



HeLa cells were subjected to SDS PAGE followed by western blot with Catalog No:112260(KYNU antibody) at dilution of 1:2000



Immunohistochemical of paraffin-embedded human ovary tumor using Catalog No:112260(KYNU antibody) at dilution of 1:50 (under 10x lens)



Immunofluorescent analysis of HepG2 cells, using

KYNU antibody



Catalog Number: 112260

KYNU antibody Catalog No:112260 at 1:25

dilution and Rhodamine-labeled goat anti-rabbit
IgG (red).