

# KTN1 antibody

Catalog Number: 112253

## Product name

KTN1 antibody

## Immunogen

[Human KTN1 Recombinant protein \(His tag\)](#)

## Specificity

Human, Mouse; other species not tested.

## Antibody description

KTN1 Rabbit Polyclonal antibody. Positive IHC detected in human ovary tissue, human testis tissue. Positive IF detected in Hela cells. Positive WB detected in mouse testis tissue, Jurkat cells, K-562 cells, PC-3 cells. Positive IP detected in Jurkat cells. Observed molecular weight by Western-blot: 156 kDa

## Preparation

This antibody was obtained by immunization of KTN1 recombinant protein (Accession Number: XM\_011536753). Purification method: Antigen affinity purified.

## Formulation

PBS with 0.02% sodium azide and 50% glycerol pH 7.3.

## Storage

Store at -20°C. DO NOT ALIQUOT

## Clonality

Polyclonal

## Ig Type

Rabbit IgG

## Applications

ELISA, WB, IHC, IF, IP

## Dilutions

Recommended Dilution:

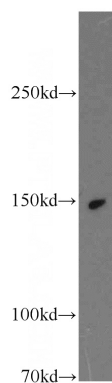
WB: 1:1000-1:10000

IP: 1:200-1:2000

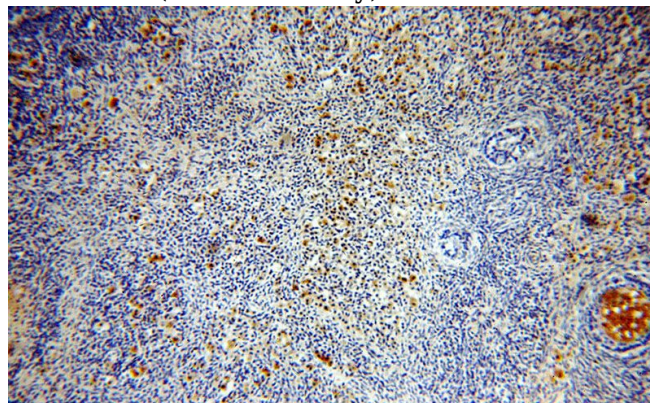
IHC: 1:20-1:200

IF: 1:10-1:100

## Validations



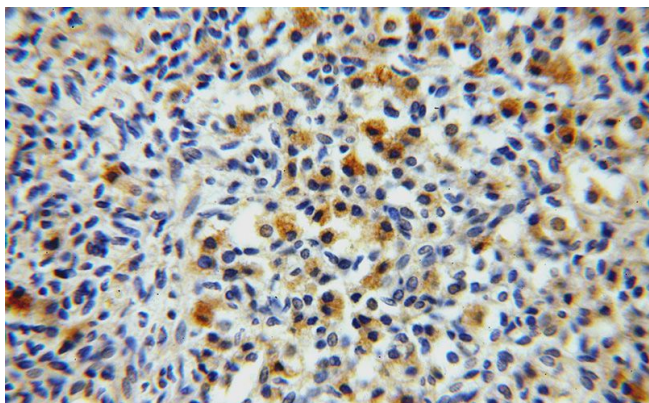
mouse testis tissue were subjected to SDS PAGE followed by western blot with Catalog No:112253(KTN1 antibody) at dilution of 1:2000



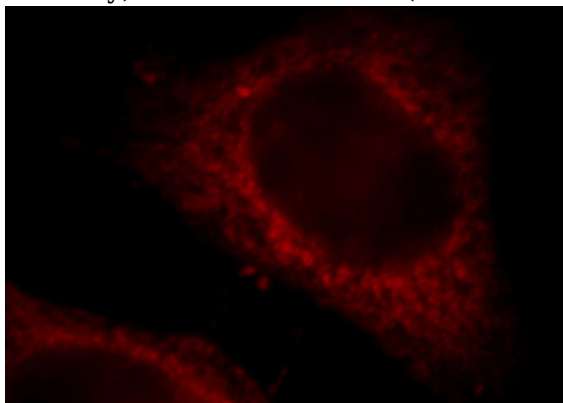
Immunohistochemical of paraffin-embedded human ovary using Catalog No:112253(KTN1 antibody) at dilution of 1:100 (under 10x lens)

# KTN1 antibody

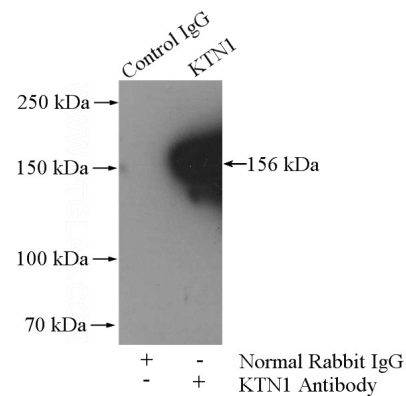
Catalog Number: 112253



Immunohistochemical of paraffin-embedded human ovary using Catalog No:112253(KTN1 antibody) at dilution of 1:100 (under 40x lens)



Immunofluorescent analysis of HeLa cells, using KTN1 antibody Catalog No:112253 at 1:25 dilution and Rhodamine-labeled goat anti-rabbit



IgG (red).

IP Result of anti-KTN1 (IP:Catalog No:112253, 4ug; Detection:Catalog No:112253 1:500) with Jurkat cells lysate 1200ug.