

# LIPH antibody

Catalog Number: 112243

## Product name

LIPH antibody

WB: 1:200-1:2000

IP: 1:200-1:2000

## Specificity

Human, Mouse, Rat; other species not tested.

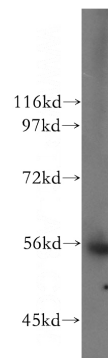
IHC: 1:20-1:200

IF: 1:10-1:100

## Antibody description

LIPH Rabbit Polyclonal antibody. Positive WB detected in A549 cells, COLO 320 cells, mouse lung tissue. Positive IP detected in mouse lung tissue. Positive IHC detected in human pancreas tissue. Positive IF detected in A549 cells. Observed molecular weight by Western-blot: 55 kDa

## Validations



## Preparation

This antibody was obtained by immunization of LIPH recombinant protein (Accession Number: NM\_139248). Purification method: Antigen affinity purified.

A549 cells were subjected to SDS PAGE followed by western blot with Catalog No:112243(LIPH antibody) at dilution of 1:500

## Formulation

PBS with 0.02% sodium azide and 50% glycerol pH 7.3.

## Storage

Store at -20°C. DO NOT ALIQUOT

## Clonality

Polyclonal

## Ig Type

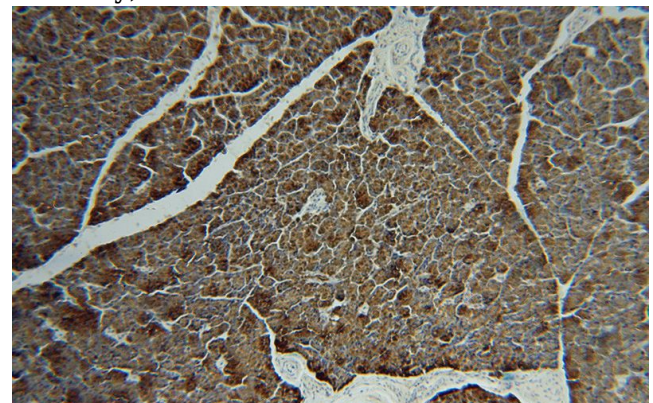
Rabbit IgG

## Applications

ELISA, WB, IHC, IP, IF

## Dilutions

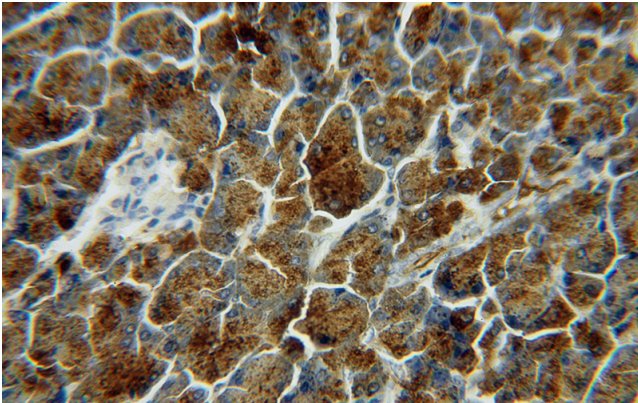
Recommended Dilution:



Immunohistochemical of paraffin-embedded human pancreas using Catalog No:112243(LIPH antibody) at dilution of 1:50 (under 10x lens)

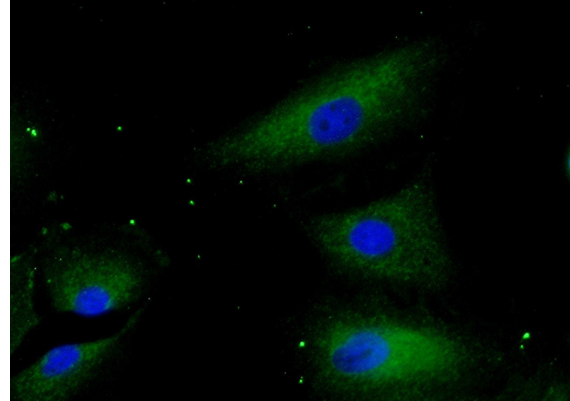
# LIPH antibody

Catalog Number: 112243



Immunohistochemical of paraffin-embedded human pancreas using Catalog No:112243(LIPH antibody) at dilution of 1:50 (under 40x lens)

IP Result of anti-LIPH (IP:Catalog No:112243, 4ug; Detection:Catalog No:112243 1:500) with mouse lung tissue lysate 4000ug.



Immunofluorescent analysis of (-20oc Ethanol) fixed A549 cells using Catalog No:112243(LIPH Antibody) at dilution of 1:25 and Alexa Fluor 488-conjugated AffiniPure Goat Anti-Rabbit IgG(H+L)

