

LIPC antibody



Catalog Number: 112242

Product name

LIPC antibody

IHC: 1:20-1:200

IF: 1:20-1:200

Specificity

Human, Mouse, Rat; other species not tested.

Antibody description

LIPC Rabbit Polyclonal antibody. Positive IHC detected in human lung cancer tissue. Positive IF detected in HepG2 cells. Positive WB detected in mouse liver tissue, HepG2 cells. Observed molecular weight by Western-blot: 65 kDa

Preparation

This antibody was obtained by immunization of LIPC recombinant protein (Accession Number: BC146659). Purification method: Antigen affinity purified.

Formulation

PBS with 0.1% sodium azide and 50% glycerol pH 7.3.

Storage

Store at -20°C. DO NOT ALIQUOT

Clonality

Polyclonal

Ig Type

Rabbit IgG

Applications

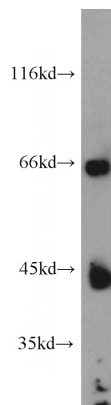
ELISA, WB, IHC, IF

Dilutions

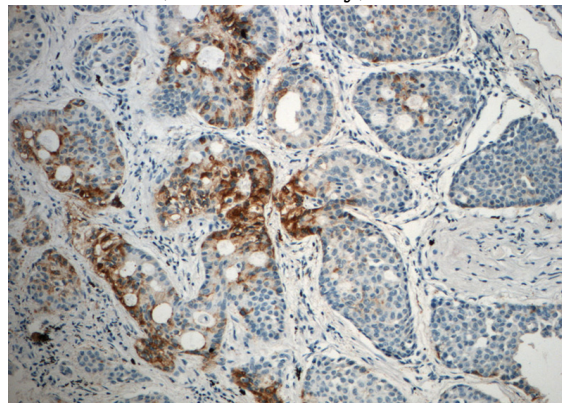
Recommended Dilution:

WB: 1:200-1:2000

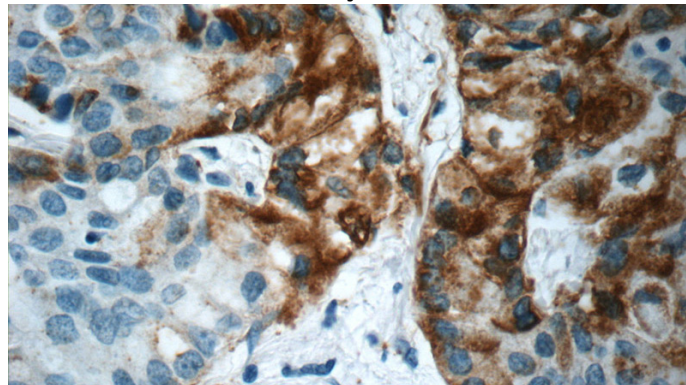
Validations



mouse liver tissue were subjected to SDS PAGE followed by western blot with Catalog No:112242(LIPC antibody) at dilution of 1:500



Immunohistochemistry of paraffin-embedded human lung cancer slide using Catalog No:112242(LIPC Antibody) at dilution of 1:50



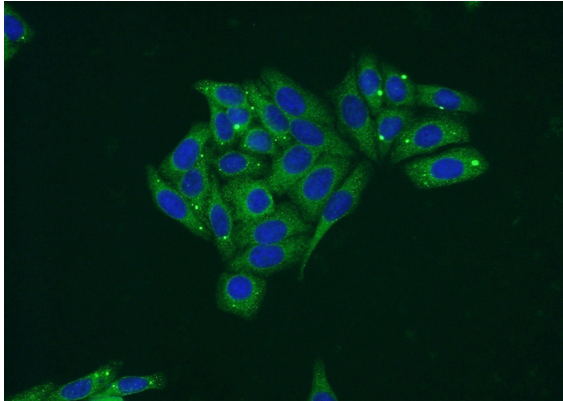
Immunohistochemistry of paraffin-embedded human lung cancer slide using Catalog

LIPC antibody



Catalog Number: 112242

No:112242(LIPC Antibody) at dilution of 1:50



Immunofluorescent analysis of HepG2 cells using Catalog No:112242(LIPC Antibody) at dilution of 1:50 and Alexa Fluor 488-conjugated AffiniPure Goat Anti-Rabbit IgG(H+L)