

# LIN7C antibody



Catalog Number: 112238

## Product name

LIN7C antibody

## Immunogen

[Human LIN7C Recombinant protein \(His tag\)](#)

## Specificity

human, mouse, rat; other species not tested.

## Antibody description

LIN7C Rabbit Polyclonal antibody. Positive WB detected in human cerebellum tissue, human brain tissue, human kidney tissue. Observed molecular weight by Western-blot: 25kd

## Preparation

This antibody was obtained by immunization of LIN7C recombinant protein (Accession Number: NM\_018362). Purification method: Antigen affinity purified.

## Formulation

PBS with 0.02% sodium azide and 50% glycerol pH 7.3.

## Storage

Store at -20°C. DO NOT ALIQUOT

## Clonality

Polyclonal

## Ig Type

Rabbit IgG

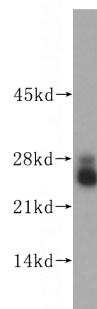
## Applications

ELISA, WB

## Dilutions

Recommended Dilution:  
WB: 1:1000-1:10000

## Validations



human cerebellum tissue were subjected to SDS PAGE followed by western blot with Catalog No:112238(LIN7C antibody) at dilution of 1:800