

# LIN41 antibody



Catalog Number: 112235

## Product name

LIN41 antibody

## Specificity

Human, Mouse, Rat; other species not tested.

## Antibody description

LIN41 Rabbit Polyclonal antibody. Positive WB detected in mouse kidney tissue, DU 145 cells, NIH/3T3 cells. Positive IHC detected in human testis. Observed molecular weight by Western-blot: 93kd

## Preparation

This antibody was obtained by immunization of Peptide (Accession Number: NM\_001039111). Purification method: Antigen affinity purified.

## Formulation

0.1M NaHCO<sub>3</sub>, 0.1M glycine, 0.02% sodium azide and 50% glycerol pH 7.3.

## Storage

Store at -20°C. DO NOT ALIQUOT

## Clonality

Polyclonal

## Ig Type

Rabbit IgG

## Applications

ELISA, WB, IHC

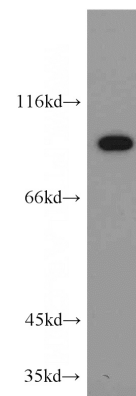
## Dilutions

Recommended Dilution:

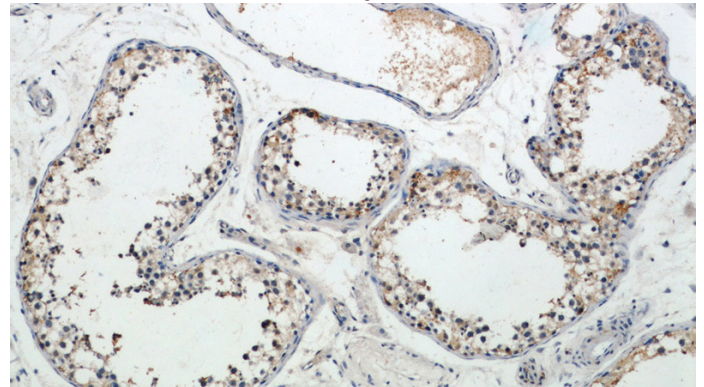
WB: 1:200-1:2000

IHC: 1:20-1:200

## Validations



mouse kidney tissue were subjected to SDS PAGE followed by western blot with Catalog No:112235(LIN41 antibody) at dilution of 1:300



Immunohistochemical of paraffin-embedded human testis using Catalog No:112235(LIN41 antibody) at dilution of 1:50 (under 10x lens)