

LIN28B antibody



Catalog Number: 112233

Product name

LIN28B antibody

IP: 1:200-1:2000

IF: 1:50-1:500

Specificity

Human, Mouse; other species not tested.

Antibody description

LIN28B Rabbit Polyclonal antibody. Positive WB detected in mouse embryo tissue, HEK-293 cells. Positive IP detected in HEK-293 cells. Positive IF detected in HEK-293 cells. Observed molecular weight by Western-blot: 27 kDa

Preparation

This antibody was obtained by immunization of LIN28B recombinant protein (Accession Number: NM_001004317). Purification method: Antigen Affinity purified.

Formulation

PBS with 0.02% sodium azide and 50% glycerol pH 7.3.

Storage

Store at -20°C. DO NOT ALIQUOT

Clonality

Polyclonal

Ig Type

Rabbit IgG

Applications

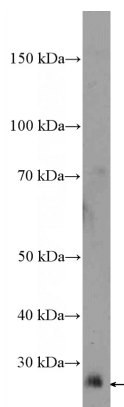
ELISA, WB, IP, IF

Dilutions

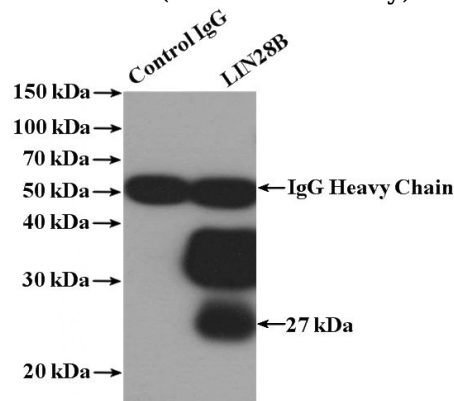
Recommended Dilution:

WB: 1:200-1:1000

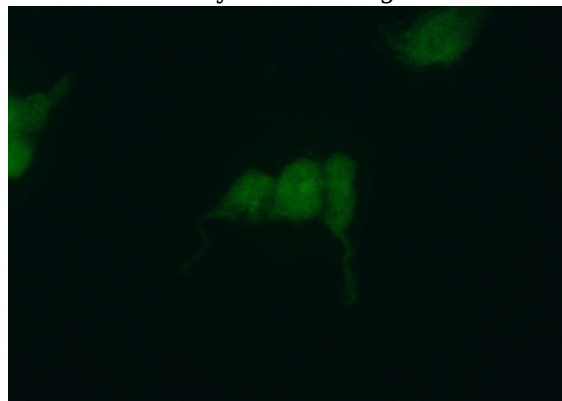
Validations



mouse embryo tissue were subjected to SDS PAGE followed by western blot with Catalog No:112233(LIN28B Antibody) at dilution of 1:300



IP Result of anti-LIN28B (IP:Catalog No:112233, 4ug; Detection:Catalog No:112233 1:500) with HEK-293 cells lysate 1480ug.



Immunofluorescent analysis of (10% Formaldehyde) fixed HEK-293 cells using Catalog

LIN28B antibody



Catalog Number: 112233

No:112233(LIN28B Antibody) at dilution of 1:50

and Alexa Fluor 488-conjugated AffiniPure Goat
Anti-Rabbit IgG(H+L)