

LIG4 antibody



Catalog Number: 112222

Product name

LIG4 antibody

Specificity

Human, Mouse; other species not tested.

Antibody description

LIG4 Rabbit Polyclonal antibody. Positive IHC detected in human prostate cancer tissue, human testis tissue. Positive WB detected in mouse testis tissue, HeLa cells, HepG2 cells, mouse liver tissue, rat testis tissue. Observed molecular weight by Western-blot: 100-104 kDa

Preparation

This antibody was obtained by immunization of LIG4 recombinant protein (Accession Number: NM_002312). Purification method: Antigen affinity purified.

Formulation

PBS with 0.1% sodium azide and 50% glycerol pH 7.3.

Storage

Store at -20°C. DO NOT ALIQUOT

Clonality

Polyclonal

Ig Type

Rabbit IgG

Applications

ELISA, WB, IHC

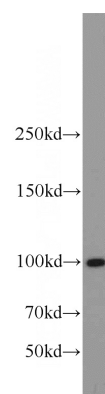
Dilutions

Recommended Dilution:

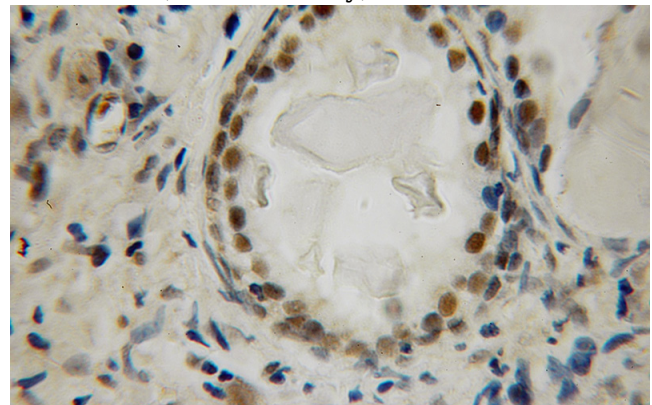
WB: 1:200-1:2000

IHC: 1:20-1:200

Validations



mouse testis tissue were subjected to SDS PAGE followed by western blot with Catalog No:112222(LIG4 antibody) at dilution of 1:600



Immunohistochemical of paraffin-embedded human prostate cancer using Catalog No:112222(LIG4 antibody) at dilution of 1:100 (under 10x lens)