

LIFR antibody



Catalog Number: 112221

Product name

LIFR antibody

Recommended Dilution:

WB: 1:200-1:2000

Specificity

Human, Mouse; other species not tested.

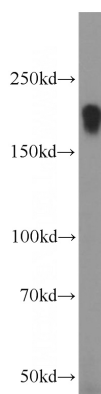
IP: 1:500-1:5000

IHC: 1:20-1:200

Antibody description

LIFR Rabbit Polyclonal antibody. Positive IP detected in mouse skeletal muscle tissue. Positive WB detected in human skeletal muscle tissue, mouse skeletal muscle tissue. Positive FC detected in HeLa cells. Positive IHC detected in human skeletal muscle tissue, human kidney tissue, human placenta tissue. Observed molecular weight by Western-blot: 190 kDa

Validations



Preparation

This antibody was obtained by immunization of LIFR recombinant protein (Accession Number: XM_011514040). Purification method: Antigen Affinity purified.

human skeletal muscle tissue were subjected to SDS PAGE followed by western blot with Catalog No:112221(LIFR antibody) at dilution of 1:800

Formulation

PBS with 0.02% sodium azide and 50% glycerol pH 7.3.

Storage

Store at -20°C. DO NOT ALIQUOT

Clonality

Polyclonal

Ig Type

Rabbit IgG

Applications

ELISA, WB, IHC, IP, FC

Dilutions

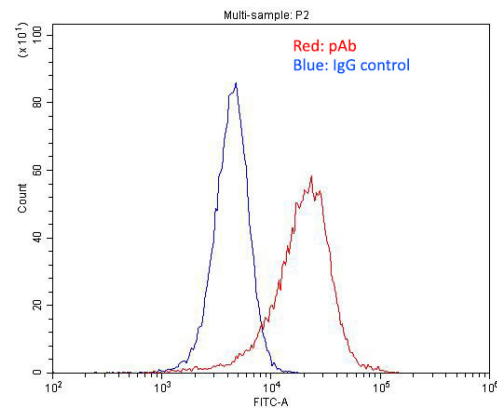
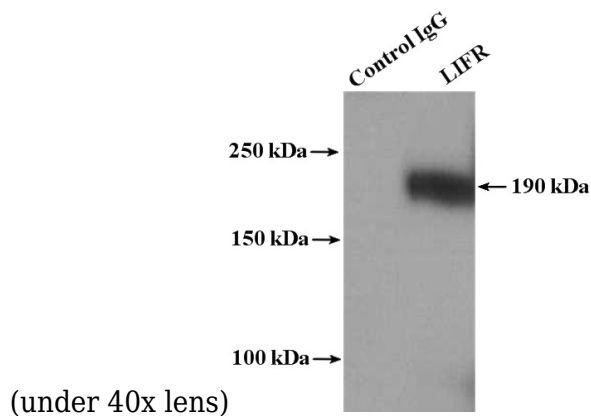


Immunohistochemistry of paraffin-embedded human skeletal muscle slide using Catalog No:112221(LIFR Antibody) at dilution of 1:50

LIFR antibody



Catalog Number: 112221



IP Result of anti-LIFR (IP:Catalog No:112221, 4ug; Detection:Catalog No:112221 1:1000) with mouse skeletal muscle tissue lysate 4000ug.

1×10^6 HeLa cells were stained with .2ug LIFR antibody (Catalog No:112221, red) and control antibody (blue). Fixed with 4% PFA blocked with 3% BSA (30 min). Alexa Fluor 488-conjugated AffiniPure Goat Anti-Rabbit IgG(H+L) with dilution 1:1500.