

LHPP antibody



Catalog Number: 112215

Product name

LHPP antibody

IHC: 1:20-1:200

IF: 1:10-1:100

Specificity

human, mouse, rat; other species not tested.

Validations

Antibody description

LHPP Rabbit Polyclonal antibody. Positive IF detected in Hela. Positive IHC detected in human kidney. Positive WB detected in human brain tissue, human liver tissue. Observed molecular weight by Western-blot: 29kd



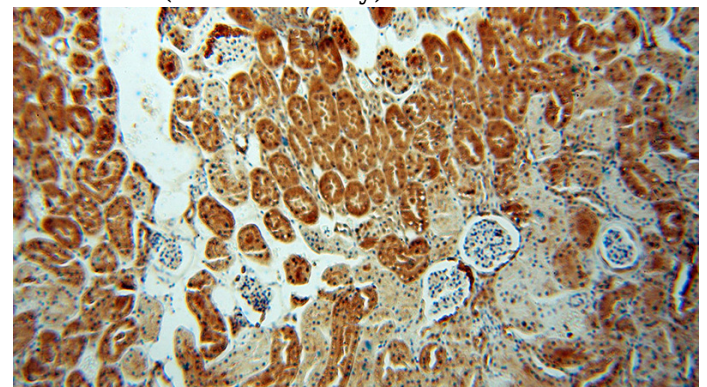
Preparation

This antibody was obtained by immunization of LHPP recombinant protein (Accession Number: BC007324). Purification method: Antigen affinity purified.

human brain tissue were subjected to SDS PAGE followed by western blot with Catalog No:112215(LHPP antibody) at dilution of 1:500

Formulation

PBS with 0.02% sodium azide and 50% glycerol pH 7.3.



Storage

Store at -20°C. DO NOT ALIQUOT

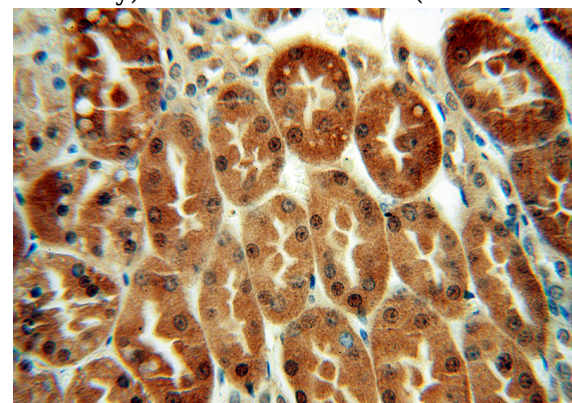
Clonality

Polyclonal

Immunohistochemical of paraffin-embedded human kidney using Catalog No:112215(LHPP antibody) at dilution of 1:100 (under 10x lens)

Ig Type

Rabbit IgG



Applications

ELISA, WB, IHC, IF

Dilutions

Recommended Dilution:

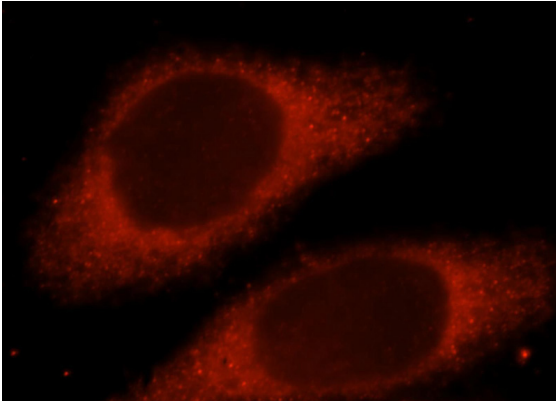
WB: 1:1000-1:10000

Immunohistochemical of paraffin-embedded human kidney using Catalog No:112215(LHPP

LHPP antibody

Catalog Number: 112215

antibody) at dilution of 1:100 (under 40x lens)



Immunofluorescent analysis of HeLa cells, using LHPP antibody Catalog No:112215 at 1:25 dilution and Rhodamine-labeled goat anti-rabbit IgG (red).