

# LGP2 antibody

Catalog Number: 112209

## Product name

LGP2 antibody

IP: 1:200-1:1000

IHC: 1:10-1:100

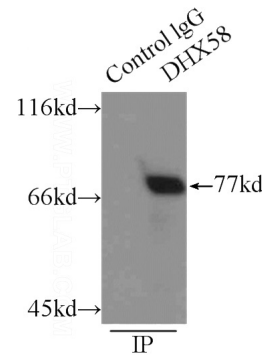
## Specificity

Human, Mouse, Rat; other species not tested.

## Validations

## Antibody description

LGP2 Rabbit Polyclonal antibody. Positive IP detected in mouse liver tissue. Positive WB detected in HEK-293 cells. Positive IHC detected in human breast cancer tissue. Observed molecular weight by Western-blot: 77 kDa



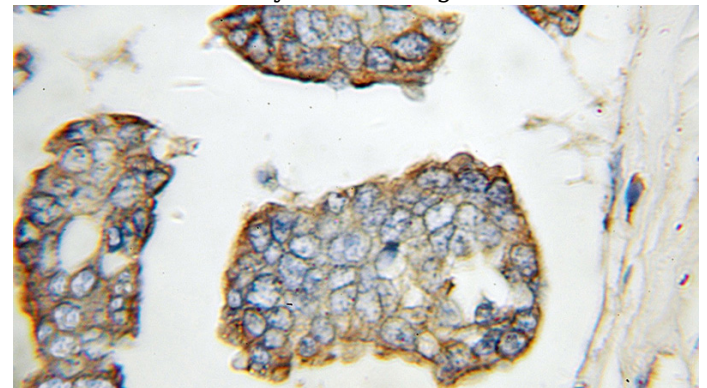
## Preparation

This antibody was obtained by immunization of LGP2 recombinant protein (Accession Number: XM\_047436724). Purification method: Antigen affinity purified.

IP Result of anti-DHX58 (IP: Catalog No: 112209, 3ug; Detection: Catalog No: 112209 1:300) with mouse liver tissue lysate 6000ug.

## Formulation

PBS with 0.1% sodium azide and 50% glycerol pH 7.3.



## Storage

Store at -20°C. DO NOT ALIQUOT

## Clonality

Polyclonal

Immunohistochemical of paraffin-embedded human breast cancer using Catalog No: 112209 (DHX58 antibody) at dilution of 1:10

## Ig Type

Rabbit IgG

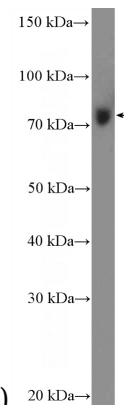
## Applications

ELISA, IHC, IP, WB

## Dilutions

Recommended Dilution:

WB: 1:200-1:1000



(under 10x lens)

HEK-293 cells were subjected to SDS PAGE followed by western blot with Catalog

# LGP2 antibody



Catalog Number: 112209

---

No:112209(DHX58 Antibody) at dilution of 1:300