

# LEPREL1 antibody



Catalog Number: 112198

## Product name

LEPREL1 antibody

## Specificity

Human, Mouse; other species not tested.

## Antibody description

LEPREL1 Rabbit Polyclonal antibody. Positive IP detected in mouse kidney tissue. Positive WB detected in mouse kidney tissue, HEK-293 cells, human placenta tissue, L02 cells, mouse placenta tissue. Positive IHC detected in human liver tissue, human brain tissue, human kidney tissue, human lung tissue, human placenta tissue, human skin tissue, human testis tissue. Observed molecular weight by Western-blot: 80 kDa

## Preparation

This antibody was obtained by immunization of LEPREL1 recombinant protein (Accession Number: NM\_001134418). Purification method: Antigen affinity purified.

## Formulation

PBS with 0.02% sodium azide and 50% glycerol pH 7.3.

## Storage

Store at -20°C. DO NOT ALIQUOT

## Clonality

Polyclonal

## Ig Type

Rabbit IgG

## Applications

ELISA, IHC, IP, WB

## Dilutions

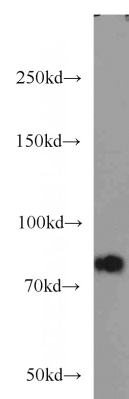
Recommended Dilution:

WB: 1:200-1:2000

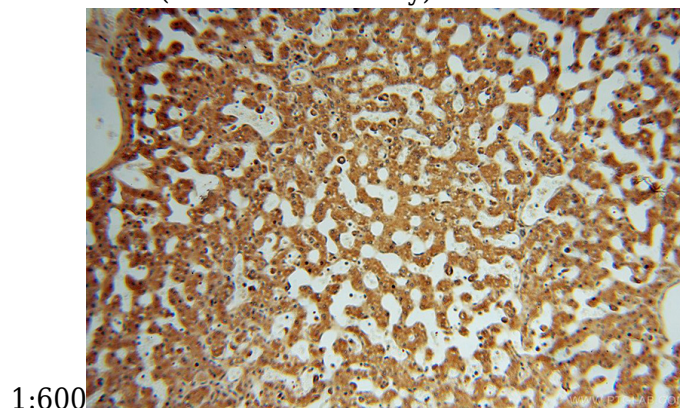
IP: 1:200-1:2000

IHC: 1:20-1:200

## Validations



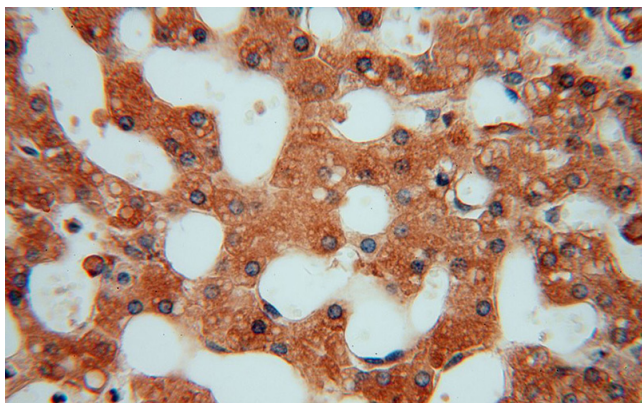
mouse kidney tissue were subjected to SDS PAGE followed by western blot with Catalog No:112198(LEPREL1 antibody) at dilution of



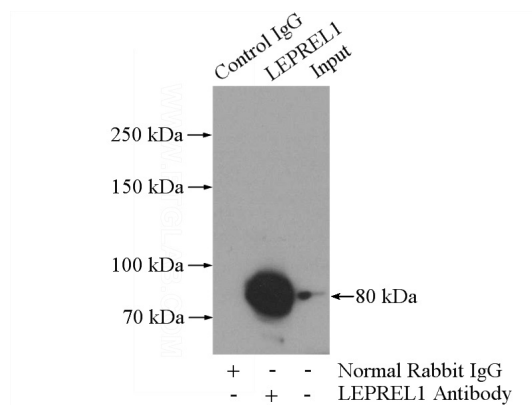
Immunohistochemical of paraffin-embedded human liver using Catalog No:112198(LEPREL1 antibody) at dilution of 1:50 (under 10x lens)

# LEPREL1 antibody

Catalog Number: 112198



Immunohistochemical of paraffin-embedded human liver using Catalog No:112198(LEPREL1 antibody) at dilution of 1:50 (under 40x lens)



IP Result of anti-LEPREL1 (IP:Catalog No:112198, 4ug; Detection:Catalog No:112198 1:600) with mouse kidney tissue lysate 4000ug.