

LEPR antibody

Catalog Number: 112197

Product name

LEPR antibody

WB: 1:500-1:5000

IP: 1:200-1:2000

Specificity

Human, Mouse; other species not tested.

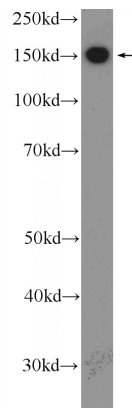
IHC: 1:20-1:200

IF: 1:10-1:100

Antibody description

LEPR Rabbit Polyclonal antibody. Positive FC detected in HeLa cells. Positive IF detected in MCF-7 cells. Positive IHC detected in human prostate hyperplasia tissue, human heart tissue. Positive IP detected in mouse heart tissue. Positive WB detected in mouse heart tissue, PC-3 cells. Observed molecular weight by Western-blot: 150 kDa

Validations



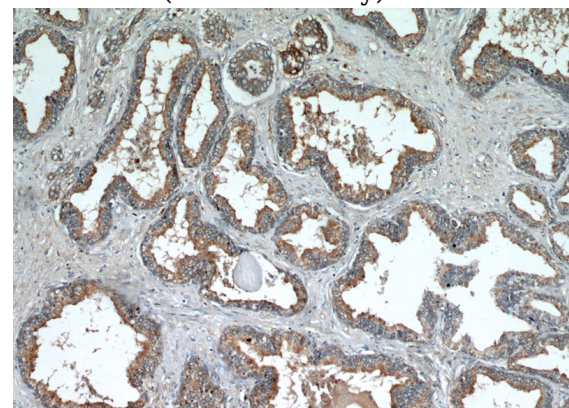
Preparation

This antibody was obtained by immunization of Peptide (Accession Number: NM_002303). Purification method: Antigen affinity purified.

mouse heart tissue were subjected to SDS PAGE followed by western blot with Catalog No:112197(LEPR Antibody) at dilution of 1:1000

Formulation

PBS with 0.02% sodium azide and 50% glycerol pH 7.3.



Storage

Store at -20°C. DO NOT ALIQUOT

Clonality

Polyclonal

Ig Type

Rabbit IgG

Immunohistochemical of paraffin-embedded human prostate hyperplasia using Catalog No:112197(LEPR antibody) at dilution of 1:50 (under 10x lens)

Applications

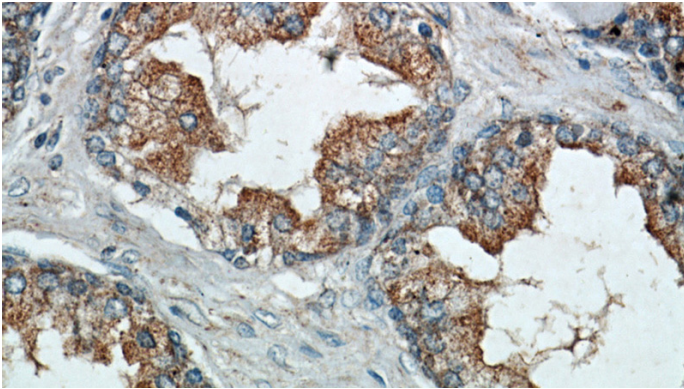
ELISA, IHC, IF, WB, IP, FC

Dilutions

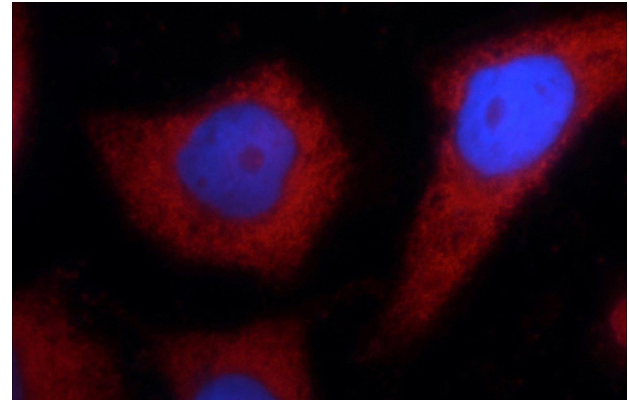
Recommended Dilution:

LEPR antibody

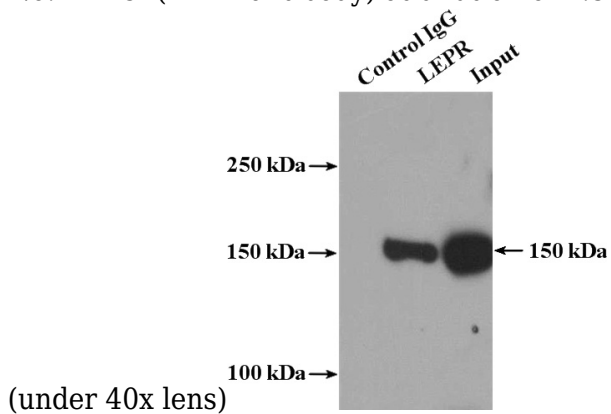
Catalog Number: 112197



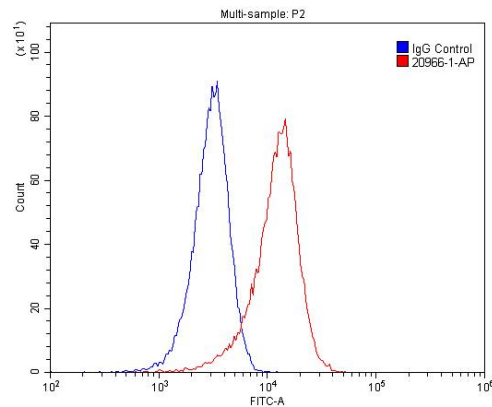
Immunohistochemical of paraffin-embedded human prostate hyperplasia using Catalog No:112197(LEPR antibody) at dilution of 1:50



Immunofluorescent analysis of MCF-7 cells using Catalog No:112197(LEPR Antibody) at dilution of 1:25 and Rhodamine-Goat anti-Rabbit IgG



IP Result of anti-LEPR (IP:Catalog No:112197, 5ug; Detection:Catalog No:112197 1:700) with mouse heart tissue lysate 4000ug.



1X10⁶ HeLa cells were stained with 0.2ug LEPR antibody (Catalog No:112197, red) and control antibody (blue). Fixed with 4% PFA blocked with 3% BSA (30 min). Alexa Fluor 488-conjugated AffiniPure Goat Anti-Rabbit IgG(H+L) with dilution 1:1500.