

LDHC-Specific antibody



Catalog Number: 112186

Product name

LDHC-Specific antibody

IP: 1:200-1:2000

IHC: 1:20-1:200

Specificity

Human; other species not tested.

IF: 1:10-1:100

Antibody description

LDHC-Specific Rabbit Polyclonal antibody.
Positive IF detected in Hela cells. Positive IHC detected in human testis tissue, human heart tissue. Positive IP detected in mouse testis tissue. Positive WB detected in human testis tissue, A549 cells. Observed molecular weight by Western-blot: 36 kDa

Preparation

This antibody was obtained by immunization of Peptide (Accession Number: NM_002301).
Purification method: Antigen affinity purified.

Formulation

PBS with 0.02% sodium azide and 50% glycerol
pH 7.3.

Storage

Store at -20°C. DO NOT ALIQUOT

Clonality

Polyclonal

Ig Type

Rabbit IgG

Applications

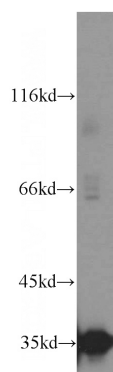
ELISA, IHC, IF, WB, IP

Dilutions

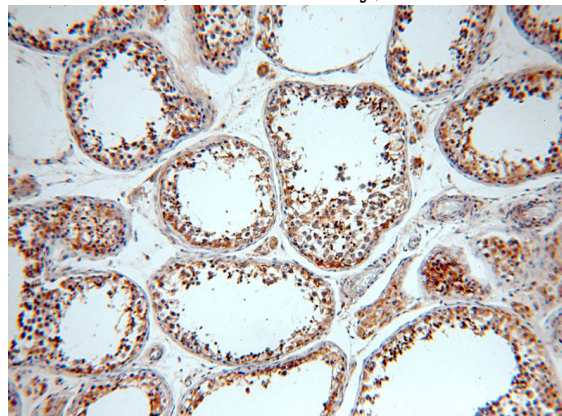
Recommended Dilution:

WB: 1:200-1:1000

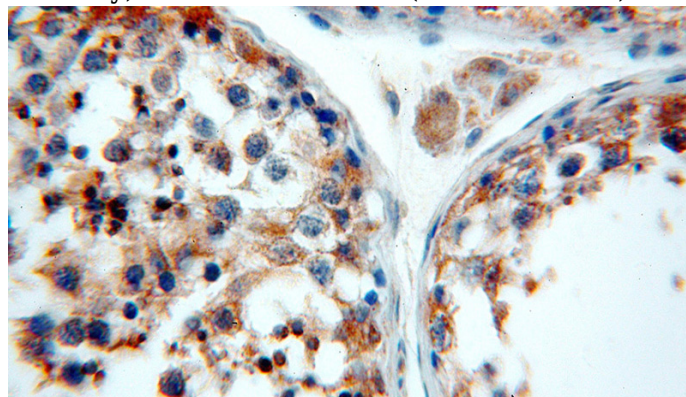
Validations



human testis tissue were subjected to SDS PAGE followed by western blot with Catalog No:112186(LDHC antibody) at dilution of 1:300



Immunohistochemical of paraffin-embedded human testis using Catalog No:112186(LDHC antibody) at dilution of 1:100 (under 10x lens)

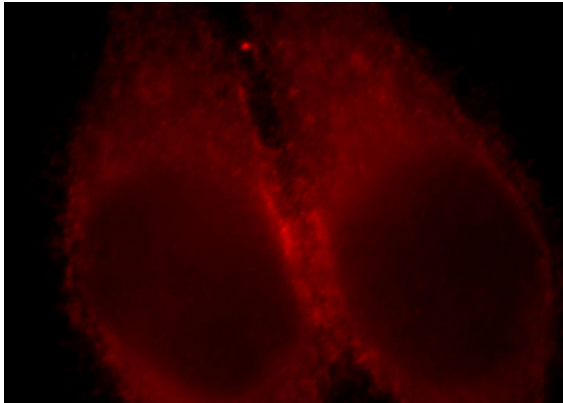


LDHC-Specific antibody



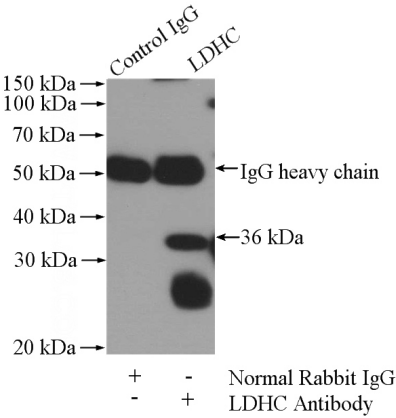
Catalog Number: 112186

Immunohistochemical of paraffin-embedded human testis using Catalog No:112186(LDHC antibody) at dilution of 1:100 (under 40x lens)



Immunofluorescent analysis of Hela cells, using LDHC antibody Catalog No:112186 at 1:25

dilution and Rhodamine-labeled goat anti-rabbit



IgG (red).

IP Result of anti-LDHC (IP:Catalog No:112186, 4ug; Detection:Catalog No:112186 1:500) with mouse testis tissue lysate 2400ug.