

LDHA-Specific antibody



Catalog Number: 112183

Product name

LDHA-Specific antibody

Recommended Dilution:

WB: 1:1000-1:10000

Specificity

Human, Mouse, Rat; other species not tested.

IP: 1:1000-1:10000

IHC: 1:20-1:200

Antibody description

LDHA-Specific Rabbit Polyclonal antibody. Positive FC detected in HepG2 cells. Positive IF detected in HepG2 cells, Hela cells. Positive IHC detected in human heart tissue, human skeletal muscle tissue, human testis tissue. Positive IP detected in mouse kidney tissue. Positive WB detected in A431 cells, Jurkat cells, mouse testis tissue, rat kidney tissue. Observed molecular weight by Western-blot: 37 kDa

IF: 1:20-1:200

Validations



A431 cells were subjected to SDS PAGE followed by western blot with Catalog No:112183(LDHA-Specific antibody) at dilution of 1:2000

Preparation

This antibody was obtained by immunization of Peptide (Accession Number: NM_005566). Purification method: Antigen affinity purified.

Formulation

PBS with 0.02% sodium azide and 50% glycerol pH 7.3.

Storage

Store at -20°C. DO NOT ALIQUOT

Clonality

Polyclonal

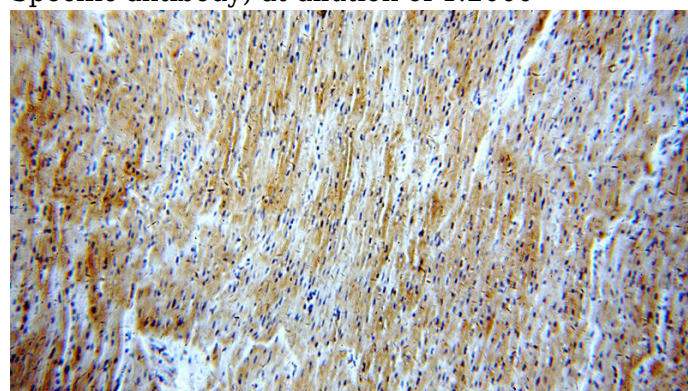
Ig Type

Rabbit IgG

Applications

ELISA, WB, IHC, IF, FC, IP

Dilutions

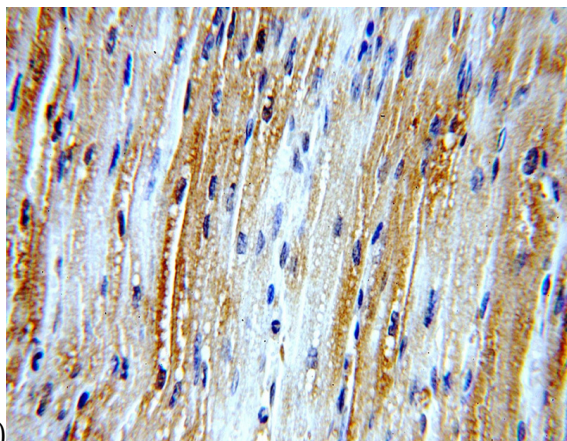


Immunohistochemical of paraffin-embedded human heart using Catalog No:112183(LDHA-Specific antibody) at dilution of 1:100 (under 10x

LDHA-Specific antibody

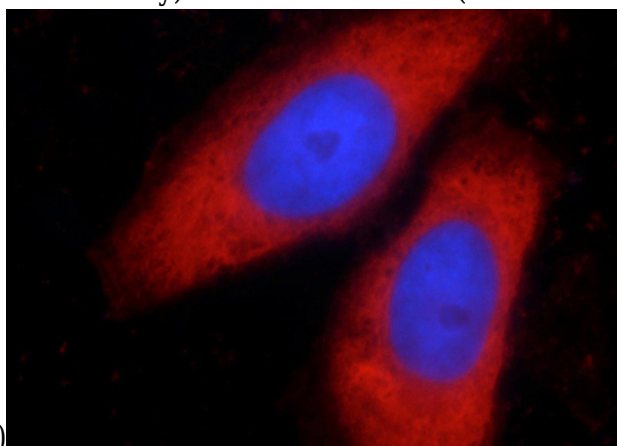


Catalog Number: 112183



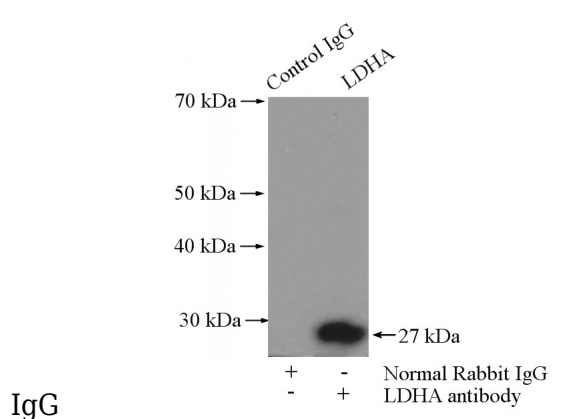
lens)

Immunohistochemical of paraffin-embedded human heart using Catalog No:112183(LDHA-Specific antibody) at dilution of 1:100 (under 40x

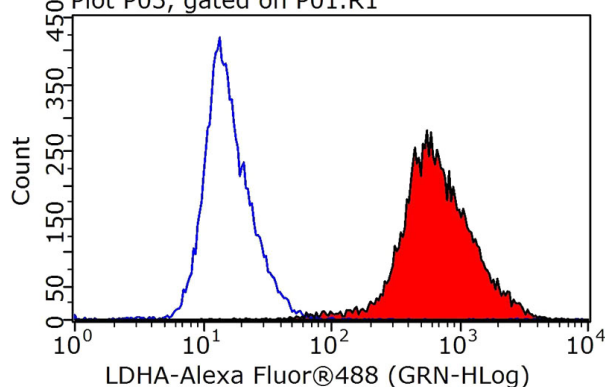


lens)

Immunofluorescent analysis of HepG2 cells using Catalog No:112183(LDHA-Specific Antibody) at dilution of 1:100 and Rhodamine-Goat anti-Rabbit



IP Result of anti-LDHA-Specific (IP:Catalog No:112183, 4ug; Detection:Catalog No:112183 1:2000) with mouse kidney tissue lysate 4000ug. Plot P03, gated on P01.R1



1X10⁶ HepG2 cells were stained with 0.2ug LDHA-Specific antibody (Catalog No:112183, red) and control antibody (blue). Fixed with 90% MeOH blocked with 3% BSA (30 min). Alexa Fluor 488-conjugated AffiniPure Goat Anti-Rabbit IgG(H+L) with dilution 1:1000.