

LDB3 antibody

Catalog Number: 112180

Product name

LDB3 antibody

Specificity

human, mouse, rat; other species not tested.

Antibody description

LDB3 Rabbit Polyclonal antibody. Positive IHC detected in human prostate cancer. Positive WB detected in human skeletal muscle tissue. Observed molecular weight by Western-blot: 32kd, 78-80kd

Preparation

This antibody was obtained by immunization of LDB3 recombinant protein (Accession Number: XM_017015609). Purification method: Antigen affinity purified.

Formulation

PBS with 0.1% sodium azide and 50% glycerol pH 7.3.

Storage

Store at -20°C. DO NOT ALIQUOT

Clonality

Polyclonal

Ig Type

Rabbit IgG

Applications

ELISA, WB, IHC

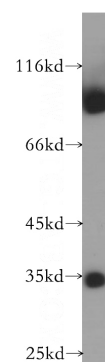
Dilutions

Recommended Dilution:

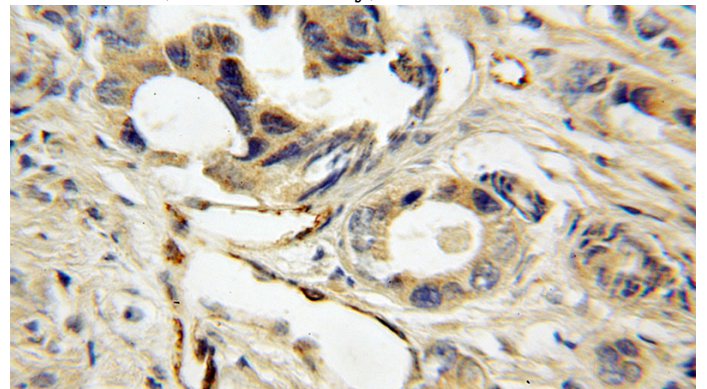
WB: 1:500-1:5000

IHC: 1:20-1:200

Validations



human skeletal muscle tissue were subjected to SDS PAGE followed by western blot with Catalog No:112180(LDB3 antibody) at dilution of 1:1000



Immunohistochemical of paraffin-embedded human prostate cancer using Catalog No:112180(LDB3 antibody) at dilution of 1:50 (under 10x lens)