

# LCOR antibody

Catalog Number: 112176

## Product name

LCOR antibody

IHC: 1:20-1:200

IF: 1:50-1:500

## Specificity

Human, Mouse, Rat; other species not tested.

## Antibody description

LCOR Rabbit Polyclonal antibody. Positive IF detected in HeLa cells. Positive IHC detected in human endometrial cancer tissue. Positive WB detected in HeLa cells. Observed molecular weight by Western-blot: 50 kDa

## Preparation

This antibody was obtained by immunization of LCOR recombinant protein (Accession Number: NM\_001170766). Purification method: Antigen affinity purified.

## Formulation

PBS with 0.02% sodium azide and 50% glycerol pH 7.3.

## Storage

Store at -20°C. DO NOT ALIQUOT

## Clonality

Polyclonal

## Ig Type

Rabbit IgG

## Applications

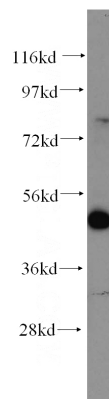
ELISA, WB, IHC, IF

## Dilutions

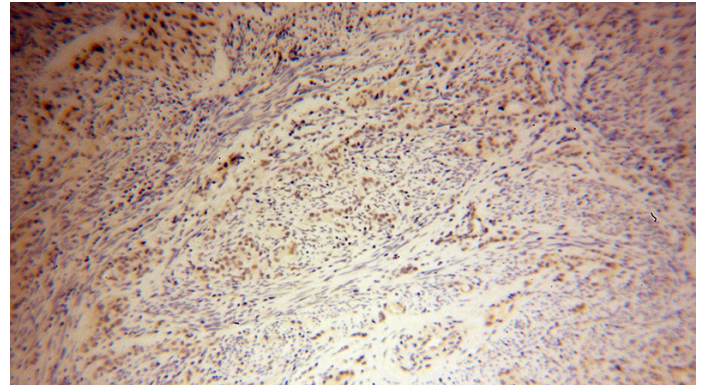
Recommended Dilution:

WB: 1:200-1:1000

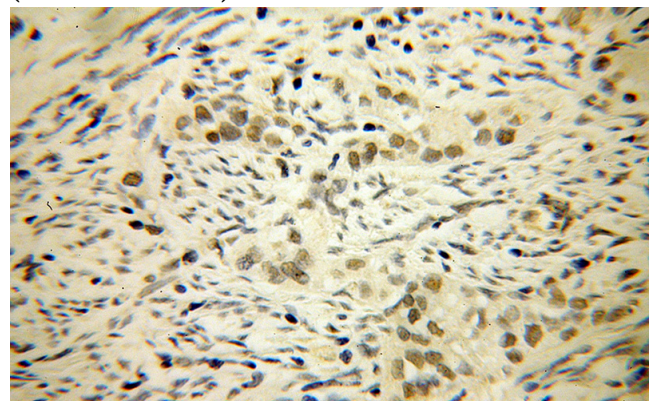
## Validations



HeLa cells were subjected to SDS PAGE followed by western blot with Catalog No:112176(LCOR antibody) at dilution of 1:300



Immunohistochemical of paraffin-embedded human endometrial cancer using Catalog No:112176(LCOR antibody) at dilution of 1:50 (under 10x lens)



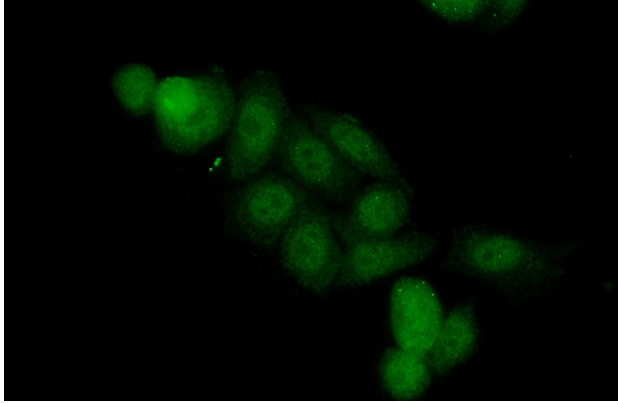
Immunohistochemical of paraffin-embedded

# LCOR antibody

Catalog Number: 112176

---

human endometrial cancer using Catalog No:112176(LCOR antibody) at dilution of 1:50 (under 40x lens)



Immunofluorescent analysis of (10% Formaldehyde) fixed HeLa cells using Catalog No:112176(LCOR Antibody) at dilution of 1:50 and Alexa Fluor 488-conjugated AffiniPure Goat Anti-Rabbit IgG(H+L)