

# LC3 antibody

Catalog Number: 112164

## Product name

LC3 antibody

## Specificity

Human, Mouse, Rat; other species not tested.

## Antibody description

LC3 Rabbit Polyclonal antibody. Positive FC detected in HeLa cells. Positive IHC detected in human gliomas tissue, human breast cancer tissue, human testis tissue. Positive IF detected in Starvation treated HEK-293 cells, Chloroquine treated HepG2 cells. Positive WB detected in Chloroquine treated HEK-293 cells, HEK-293 cells, HeLa cells, human skeletal muscle tissue, MCF7 cells, mouse brain tissue, mouse heart tissue, mouse liver tissue, mouse lung tissue, mouse testis tissue, NIH/3T3 cells, rat brain tissue. Positive IP detected in mouse brain tissue. Observed molecular weight by Western-blot: 16-18 kDa

## Preparation

This antibody was obtained by immunization of LC3 recombinant protein (Accession Number: NM\_022818). Purification method: Antigen affinity purified.

## Formulation

PBS with 0.02% sodium azide and 50% glycerol pH 7.3.

## Storage

Store at -20°C. DO NOT ALIQUOT

## Clonality

Polyclonal

## Ig Type

Rabbit IgG

## Applications

ELISA, IHC, FC, IP, IF, WB

## Dilutions

Recommended Dilution:

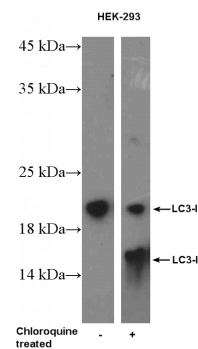
WB: 1:500-1:5000

IP: 1:500-1:5000

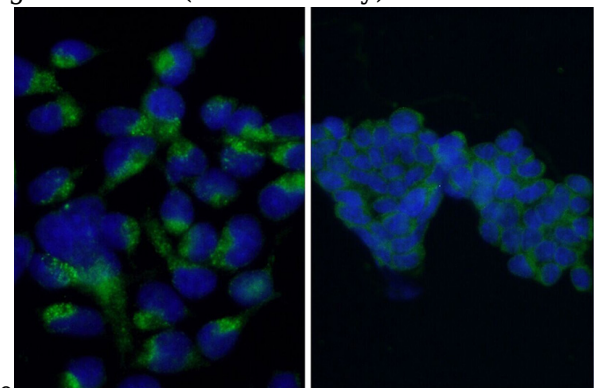
IHC: 1:20-1:200

IF: 1:20-1:200

## Validations



Chloroquine treated HEK-293 cells were subjected to SDS PAGE followed by western blot with Catalog No:112164(LC3 Antibody) at dilution of



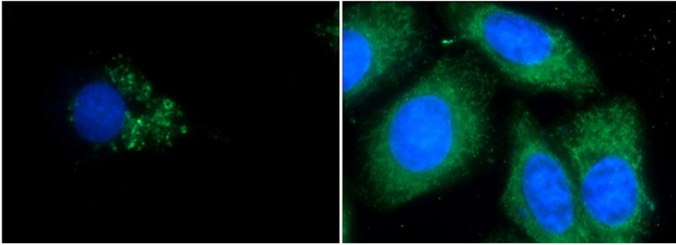
1:1000

Immunofluorescent analysis of Starvation treated HEK-293 cells using Catalog No:112164 (LC3 Antibody) at dilution of 1:50 and Alexa Fluor 488-conjugated AffiniPure Goat Anti-Rabbit IgG(H+L).

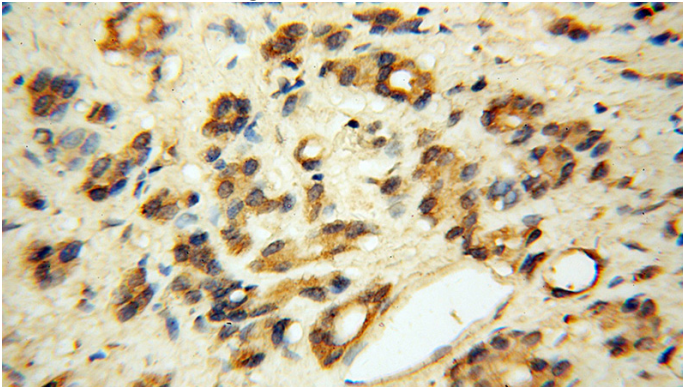
# LC3 antibody

Catalog Number: 112164

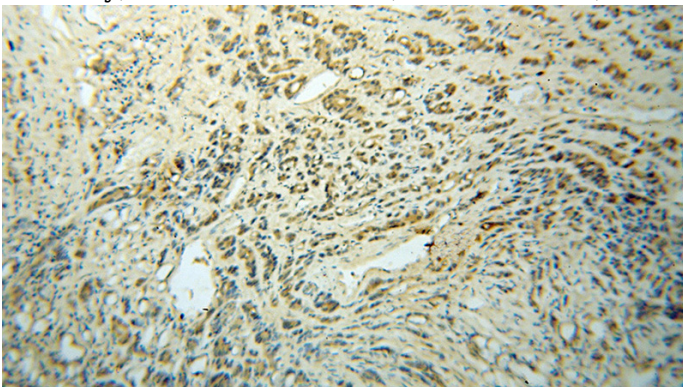
20 mM chloroquine was used to block the autophagy flux.



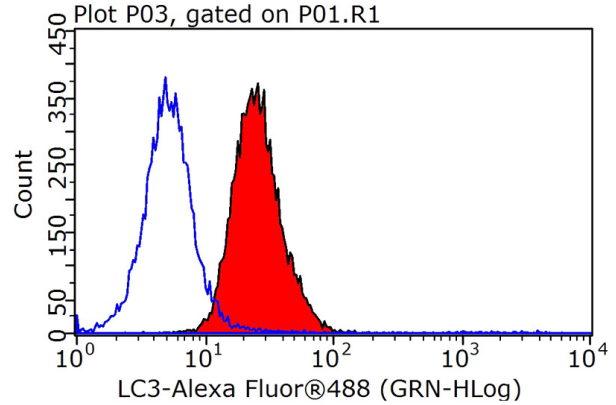
Immunofluorescent analysis of Chloroquine treated HepG2 cells and HepG2 cells using Catalog No:112164(LC3 Antibody) at dilution of 1:50 and Alexa Fluor 488-conjugated AffiniPure Goat Anti-Rabbit IgG(H+L).



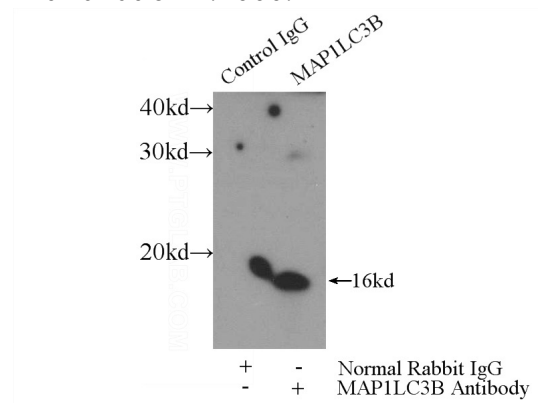
Immunohistochemical of paraffin-embedded human gliomas using Catalog No:112164 (LC3 antibody) at dilution of 1:50 (under 40x lens).



Immunohistochemical of paraffin-embedded human gliomas using Catalog No:112164(LC3 antibody) at dilution of 1:50 (under 10x lens)



1X10<sup>6</sup> HeLa cells were stained with 0.2ug LC3 antibody (Catalog No:112164, red) and control antibody (blue). Fixed with 90% MeOH blocked with 3% BSA (30 min). Alexa Fluor 488-conjugated AffiniPure Goat Anti-Rabbit IgG(H+L) with dilution 1:1000.



IP Result of anti-LC3 (IP:Catalog No:112164, 3ug; Detection:Catalog No:112164 1:1000) with mouse brain tissue lysate 4000ug.