

# LAT antibody



Catalog Number: 112154

## Product name

LAT antibody

## Specificity

Human, Mouse; other species not tested.

## Antibody description

LAT Rabbit Polyclonal antibody. Positive WB detected in Jurkat cells, MCF-7 cells, mouse thymus tissue. Observed molecular weight by Western-blot: 36-38 kDa

## Preparation

This antibody was obtained by immunization of LAT recombinant protein (Accession Number: NM\_001014987). Purification method: Antigen affinity purified.

## Formulation

PBS with 0.02% sodium azide and 50% glycerol pH 7.3.

## Storage

Store at -20°C. DO NOT ALIQUOT

## Clonality

Polyclonal

## Ig Type

Rabbit IgG

## Applications

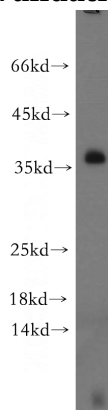
ELISA, WB

## Dilutions

Recommended Dilution:

WB: 1:200-1:1000

## Validations



Jurkat cells were subjected to SDS PAGE followed by western blot with Catalog No:112154(LAT antibody) at dilution of 1:300