

LAP2 antibody

Catalog Number: 112141

Product name

LAP2 antibody

IP: 1:200-1:2000

IHC: 1:20-1:200

Specificity

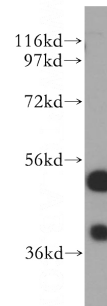
Human, Mouse, Rat; other species not tested.

IF: 1:20-1:200

Antibody description

LAP2 Rabbit Polyclonal antibody. Positive WB detected in K-562 cells, HeLa cells. Positive IP detected in HeLa cells. Positive IF detected in HeLa cells. Positive IHC detected in human skin cancer tissue. Observed molecular weight by Western-blot: 39 kDa and 51 kDa

Validations



Preparation

This antibody was obtained by immunization of LAP2 recombinant protein (Accession Number: NM_001032283). Purification method: Antigen affinity purified.

K-562 cells were subjected to SDS PAGE followed by western blot with Catalog No:112141(TMPO antibody) at dilution of 1:500

Formulation

PBS with 0.02% sodium azide and 50% glycerol pH 7.3.

Storage

Store at -20°C. DO NOT ALIQUOT

Clonality

Polyclonal

Ig Type

Rabbit IgG

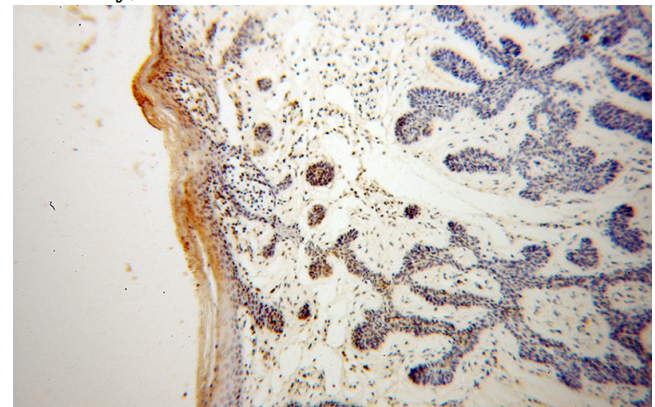
Applications

ELISA, IHC, IF, WB, IP

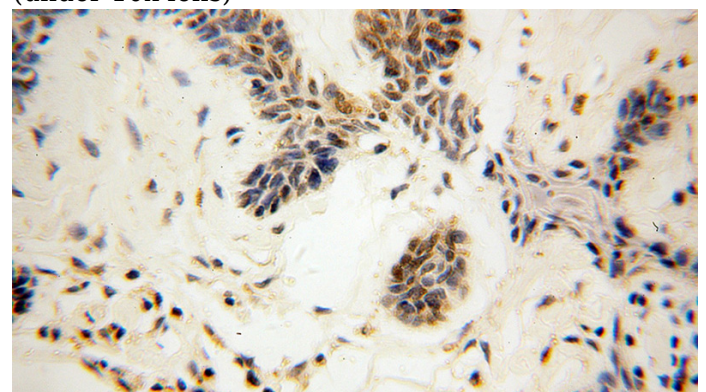
Dilutions

Recommended Dilution:

WB: 1:200-1:2000



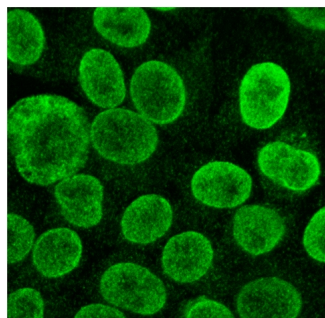
Immunohistochemical of paraffin-embedded human skin cancer using Catalog No:112141(TMPO antibody) at dilution of 1:100 (under 10x lens)



LAP2 antibody

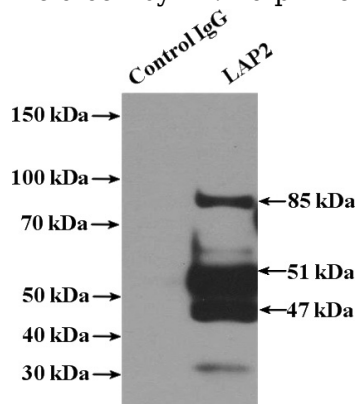
Catalog Number: 112141

Immunohistochemical of paraffin-embedded human skin cancer using Catalog No:112141(TMPO antibody) at dilution of 1:100 (under 40x lens)



IF result of 14651-1-AP
HeLa cells were fixed and permeabilized with Triton.
14651-1-AP 1:300
goat-anti-rabbit ALEXA 488
Nuclear Stain

IF result of anti-TMPO(Catalog No:112141) in Hela cell by Dr. Ralph Kehlenbach.



IP Result of anti-TMPO (IP:Catalog No:112141, 4ug; Detection:Catalog No:112141 1:500) with HeLa cells lysate 1600ug.