

LAMR1,RPSA antibody



Catalog Number: 112138

Product name

LAMR1,RPSA antibody

Specificity

Human,Mouse,Rat; other species not tested.

Antibody description

LAMR1,RPSA Rabbit Polyclonal antibody. Positive IHC detected in human ovary tumor tissue.

Preparation

This antibody was obtained by immunization of LAMR1,RPSA recombinant protein (Accession Number: NM_002295). Purification method: Antigen affinity purified.

Formulation

PBS with 0.1% sodium azide and 50% glycerol pH 7.3.

Storage

Store at -20°C. DO NOT ALIQUOT

Clonality

Polyclonal

Ig Type

Rabbit IgG

Applications

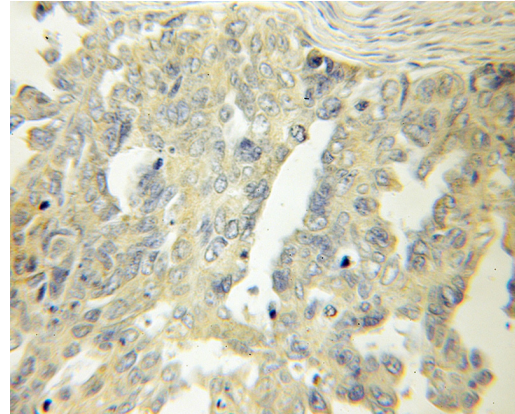
ELISA, IHC

Dilutions

Recommended Dilution:

IHC: 1:20-1:200

Validations



Immunohistochemical of paraffin-embedded human ovary tumor using Catalog No:112138(LAMR1,RPSA antibody) at dilution of 1:50 (under 10x lens)