

# KTELC1 antibody



Catalog Number: 112137

## Product name

KTELC1 antibody

## Immunogen

[Human KTELC1 Recombinant protein \(His tag\)](#)

## Specificity

Human; other species not tested.

## Antibody description

KTELC1 Rabbit Polyclonal antibody. Positive WB detected in HepG2 cells, HEK-293 cells, Hela cells. Positive IHC detected in human liver tissue, human colon tissue. Positive IF detected in HepG2 cells. Observed molecular weight by Western-blot: 65 kDa

## Preparation

This antibody was obtained by immunization of KTELC1 recombinant protein (Accession Number: NM\_152305). Purification method: Antigen affinity purified.

## Formulation

PBS with 0.1% sodium azide and 50% glycerol pH 7.3.

## Storage

Store at -20°C. DO NOT ALIQUOT

## Clonality

Polyclonal

## Ig Type

Rabbit IgG

## Applications

ELISA, WB, IF, IHC

## Dilutions

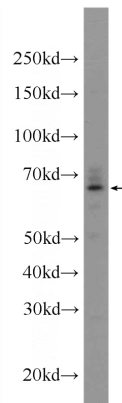
Recommended Dilution:

WB: 1:200-1:2000

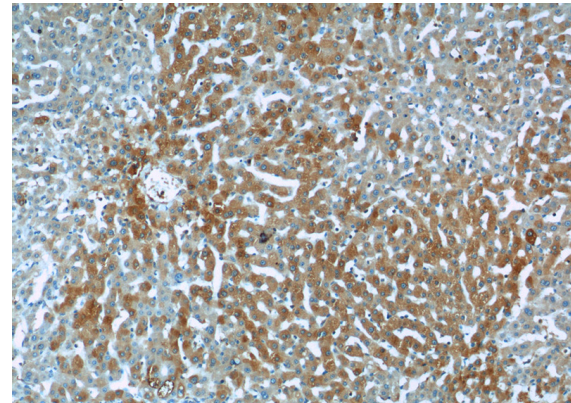
IHC: 1:20-1:200

IF: 1:10-1:100

## Validations



HepG2 cells were subjected to SDS PAGE followed by western blot with Catalog No:112137(KTELC1 Antibody) at dilution of 1:600

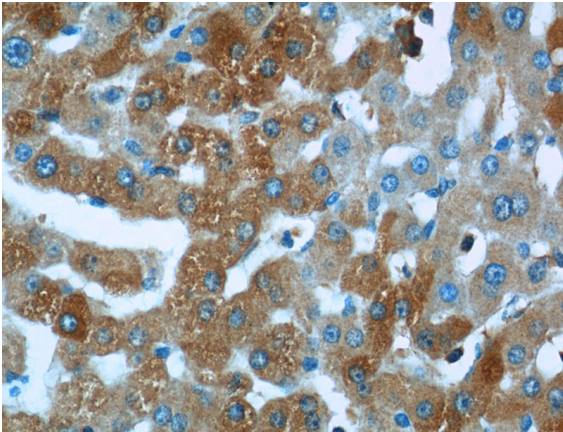


Immunohistochemistry of paraffin-embedded human liver tissue slide using Catalog No:112137(KTELC1 Antibody) at dilution of 1:50 (under 10x lens)

# KTELC1 antibody

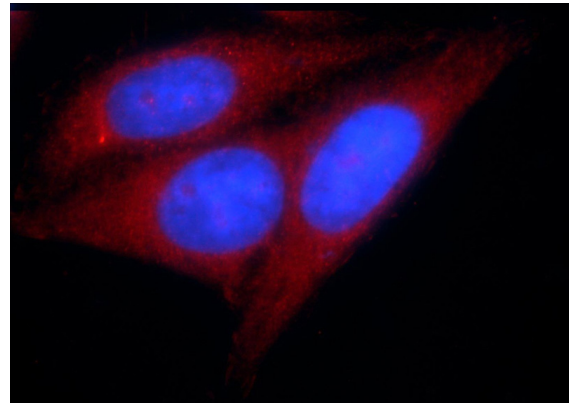
Catalog Number: 112137

---



Immunohistochemistry of paraffin-embedded human liver tissue slide using Catalog No:112137(KTELC1 Antibody) at dilution of 1:50

(under 40x lens)



Immunofluorescent analysis of HepG2 cells using Catalog No:112137(KTELC1 Antibody) at dilution of 1:25 and Rhodamine-Goat anti-Rabbit IgG