

KRT80 antibody

Catalog Number: 112135

Product name

KRT80 antibody

Specificity

human, mouse, rat; other species not tested.

Antibody description

KRT80 Rabbit Polyclonal antibody. Positive WB detected in NIH/3T3 cells, A431 cells, human skeletal muscle tissue. Positive IHC detected in human testis. Observed molecular weight by Western-blot: 47kd,50kd

Preparation

This antibody was obtained by immunization of KRT80 recombinant protein (Accession Number: NM_001081492). Purification method: Antigen affinity purified.

Formulation

PBS with 0.02% sodium azide and 50% glycerol pH 7.3.

Storage

Store at -20°C. DO NOT ALIQUOT

Clonality

Polyclonal

Ig Type

Rabbit IgG

Applications

ELISA, WB, IHC

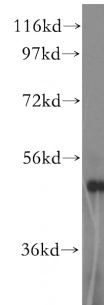
Dilutions

Recommended Dilution:

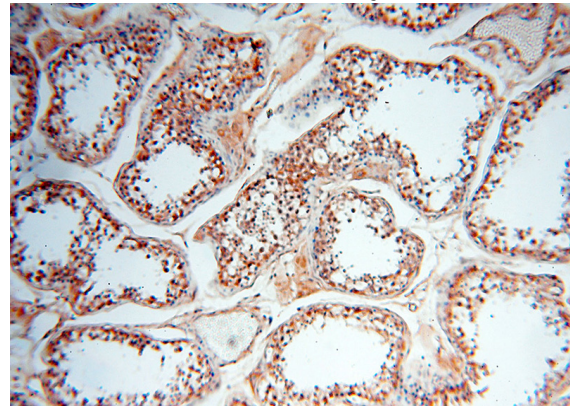
WB: 1:500-1:5000

IHC: 1:20-1:200

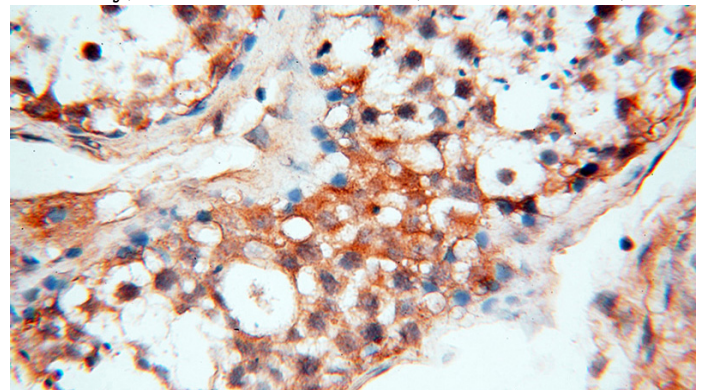
Validations



NIH/3T3 cells were subjected to SDS PAGE followed by western blot with Catalog No:112135(KRT80 antibody) at dilution of 1:1500



Immunohistochemical of paraffin-embedded human testis using Catalog No:112135(KRT80 antibody) at dilution of 1:200 (under 10x lens)



Immunohistochemical of paraffin-embedded human testis using Catalog No:112135(KRT80 antibody) at dilution of 1:200 (under 40x lens)