

# KRT23 antibody

Catalog Number: 112129

## Product name

KRT23 antibody

IHC: 1:20-1:200

IF: 1:10-1:100

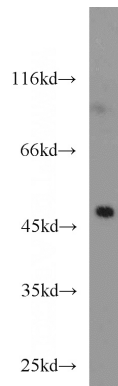
## Specificity

Human; other species not tested.

## Validations

## Antibody description

KRT23 Rabbit Polyclonal antibody. Positive WB detected in BxPC-3 cells, HeLa cells, HepG2 cells. Positive IHC detected in human colon cancer tissue, human skin cancer tissue. Positive IF detected in HeLa cells. Observed molecular weight by Western-blot: 48 kDa



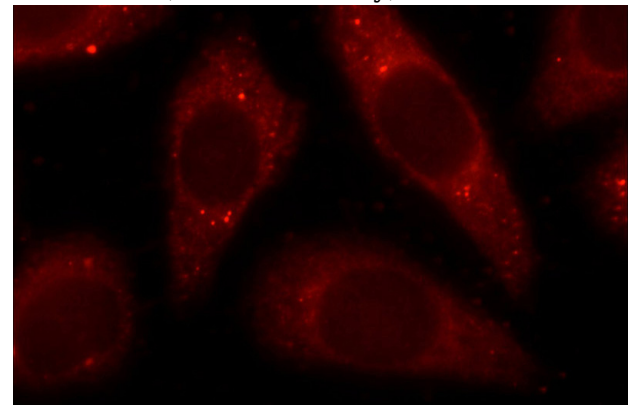
## Preparation

This antibody was obtained by immunization of KRT23 recombinant protein (Accession Number: XM\_047435728). Purification method: Antigen Affinity purified.

BxPC-3 cells were subjected to SDS PAGE followed by western blot with Catalog No:112129(KRT23 antibody) at dilution of 1:1000

## Formulation

PBS with 0.02% sodium azide and 50% glycerol pH 7.3.



## Storage

Store at -20°C. DO NOT ALIQUOT

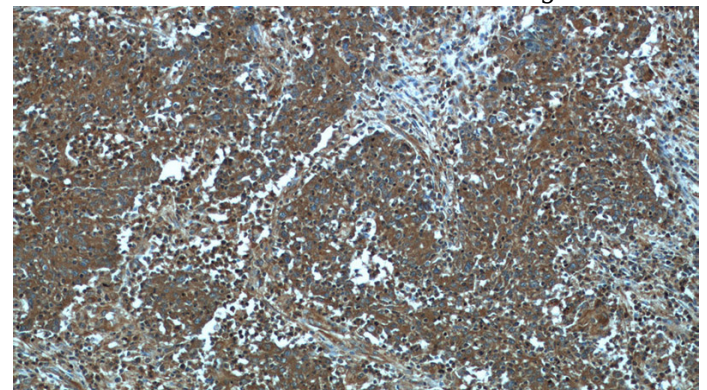
## Clonality

Polyclonal

Immunofluorescent analysis of HeLa cells using Catalog No:112129(KRT23 Antibody) at dilution of 1:25 and Rhodamine-Goat anti-Rabbit IgG

## Ig Type

Rabbit IgG



## Applications

ELISA, WB, IF, IHC

## Dilutions

Recommended Dilution:

WB: 1:500-1:5000

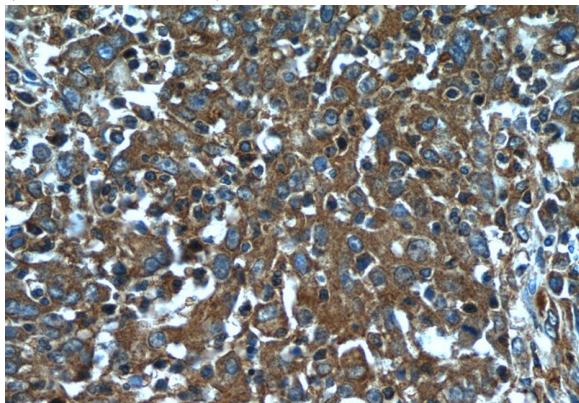
Immunohistochemistry of paraffin-embedded human colon cancer tissue slide using Catalog

# KRT23 antibody

Catalog Number: 112129

---

No:112129(KRT23 Antibody) at dilution of 1:50  
(under 10x lens)



Immunohistochemistry of paraffin-embedded  
human colon cancer tissue slide using Catalog  
No:112129(KRT23 Antibody) at dilution of 1:50  
(under 40x lens)