

KRT12 antibody



Catalog Number: 112127

Product name

Polyclonal

KRT12 antibody

Ig Type

Specificity

Rabbit IgG

Human, Mouse; other species not tested.

Applications

Antibody description

ELISA, WB

KRT12 Rabbit Polyclonal antibody. Positive WB detected in mouse eye tissue. Observed molecular weight by Western-blot: 50-55 kDa

Dilutions

Recommended Dilution:

Preparation

WB: 1:200-1:2000

This antibody was obtained by immunization of KRT12 recombinant protein (Accession Number: NM_000223). Purification method: Antigen affinity purified.

Validations

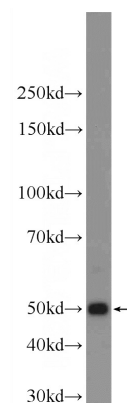
Formulation

PBS with 0.1% sodium azide and 50% glycerol pH 7.3.

Storage

Store at -20°C. DO NOT ALIQUOT

Clonality



mouse eye tissue were subjected to SDS PAGE followed by western blot with Catalog No:112127(KRT12 Antibody) at dilution of 1:600