

KRI1 antibody

Catalog Number: 112123

Product name

KRI1 antibody

Specificity

Human, Mouse, Rat; other species not tested.

Antibody description

KRI1 Rabbit Polyclonal antibody. Positive IF detected in HepG2 cells. Positive WB detected in HEK-293 cells, HeLa cells, HepG2 cells. Observed molecular weight by Western-blot: 120 kDa

Preparation

This antibody was obtained by immunization of KRI1 recombinant protein (Accession Number: BC009876). Purification method: Antigen affinity purified.

Formulation

PBS with 0.1% sodium azide and 50% glycerol pH 7.3.

Storage

Store at -20°C. DO NOT ALIQUOT

Clonality

Polyclonal

Ig Type

Rabbit IgG

Applications

ELISA, WB, IF

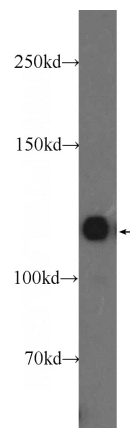
Dilutions

Recommended Dilution:

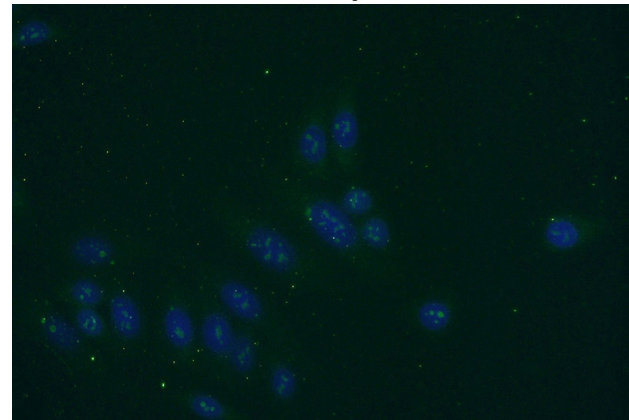
WB: 1:200-1:2000

IF: 1:20-1:200

Validations



HEK-293 cells were subjected to SDS PAGE followed by western blot with Catalog No:112123(KRI1 Antibody) at dilution of 1:600



Immunofluorescent analysis of HepG2 cells using Catalog No:112123(KRI1 Antibody) at dilution of 1:50 and Alexa Fluor 488-conjugated AffiniPure Goat Anti-Rabbit IgG(H+L)