

KRAP, SSFA2 antibody



Catalog Number: 112118

Product name

KRAP, SSFA2 antibody

IP: 1:200-1:2000

IHC: 1:20-1:200

Specificity

Human, Rat; other species not tested.

Antibody description

KRAP, SSFA2 Rabbit Polyclonal antibody. Positive IHC detected in human pancreas tissue. Positive IP detected in mouse testis tissue. Positive WB detected in rat testis tissue. Observed molecular weight by Western-blot: 180 kDa

Preparation

This antibody was obtained by immunization of KRAP, SSFA2 recombinant protein (Accession Number: NM_006751). Purification method: Antigen affinity purified.

Formulation

PBS with 0.02% sodium azide and 50% glycerol pH 7.3.

Storage

Store at -20°C. DO NOT ALIQUOT

Clonality

Polyclonal

Ig Type

Rabbit IgG

Applications

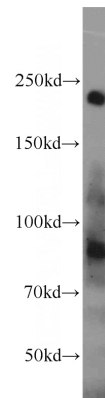
ELISA, WB, IP, IHC

Dilutions

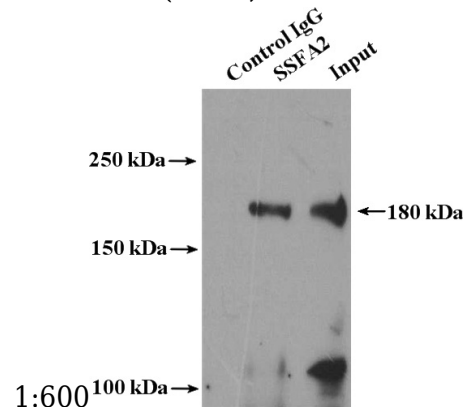
Recommended Dilution:

WB: 1:200-1:2000

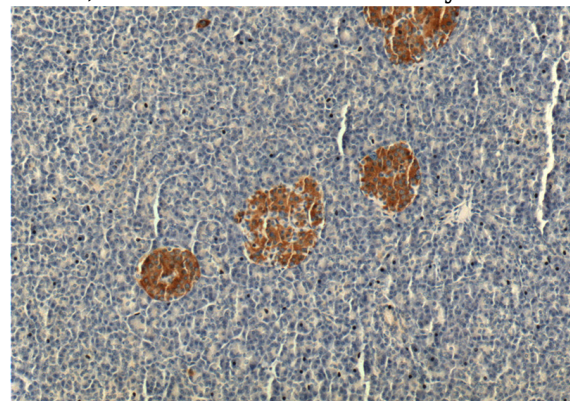
Validations



rat testis tissue were subjected to SDS PAGE followed by western blot with Catalog No:112118(KRAP, SSFA2 antibody) at dilution of



IP Result of anti-KRAP, SSFA2 (IP:Catalog No:112118, 4ug; Detection:Catalog No:112118 1:500) with mouse testis tissue lysate 4000ug.



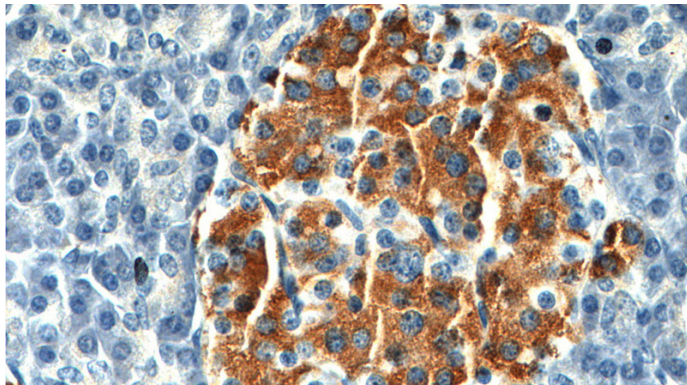
Immunohistochemistry of paraffin-embedded

KRAP, SSFA2 antibody



Catalog Number: 112118

human pancreas tissue slide using Catalog No:112118(KRAP, SSFA2 Antibody) at dilution of 1:200 (under 10x lens).



Immunohistochemistry of paraffin-embedded human pancreas tissue slide using Catalog No:112118(KRAP, SSFA2 Antibody) at dilution of 1:200 (under 40x lens).