

## Product name

KPTN antibody

## Immunogen

## Specificity

Human, Mouse, Rat; other species not tested.

## Antibody description

KPTN Rabbit Polyclonal antibody. Positive WB detected in HeLa cells, human cerebellum tissue, mouse skeletal muscle tissue, NIH/3T3 cells. Positive IHC detected in human kidney tissue, human heart tissue, human lung tissue, human ovary tissue, human placenta tissue, human skin tissue, human spleen tissue. Observed molecular weight by Western-blot: 48 kDa

## Preparation

This antibody was obtained by immunization of KPTN recombinant protein (Accession Number: NM\_007059). Purification method: Antigen affinity purified.

## Formulation

PBS with 0.02% sodium azide and 50% glycerol pH 7.3.

## Storage

Store at -20°C. DO NOT ALIQUOT

## Clonality

Polyclonal

## Ig Type

Rabbit IgG

## Applications

ELISA, WB, IHC

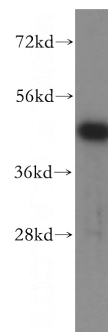
## Dilutions

Recommended Dilution:

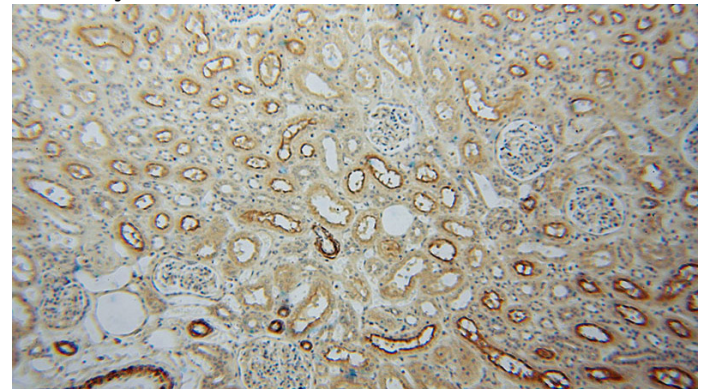
WB: 1:500-1:5000

IHC: 1:20-1:200

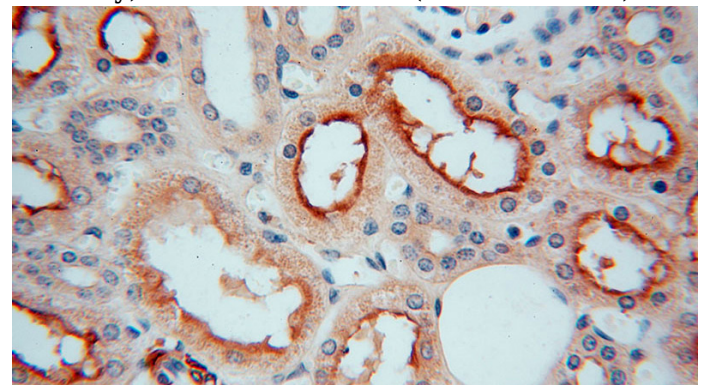
## Validations



HeLa cells were subjected to SDS PAGE followed by western blot with Catalog No:112117(KPTN antibody) at dilution of 1:400



Immunohistochemical of paraffin-embedded human kidney using Catalog No:112117(KPTN antibody) at dilution of 1:100 (under 10x lens)



# KPTN antibody



Catalog Number: 112117

---

Immunohistochemical of paraffin-embedded

human kidney using Catalog No:112117(KPTN antibody) at dilution of 1:100 (under 40x lens)