

# KPNA2 antibody

Catalog Number: 112113

## Product name

KPNA2 antibody

IHC: 1:20-1:200

IF: 1:20-1:200

## Specificity

Human, Mouse, Rat; other species not tested.

## Antibody description

KPNA2 Rabbit Polyclonal antibody. Positive IF detected in HepG2 cells. Positive IHC detected in human colon cancer tissue. Positive WB detected in HepG2 cells, Jurkat cells, mouse heart tissue, Raji cells. Observed molecular weight by Western-blot: 55-58 kDa

## Preparation

This antibody was obtained by immunization of KPNA2 recombinant protein (Accession Number: NM\_002266). Purification method: Antigen affinity purified.

## Formulation

PBS with 0.1% sodium azide and 50% glycerol pH 7.3.

## Storage

Store at -20°C. DO NOT ALIQUOT

## Clonality

Polyclonal

## Ig Type

Rabbit IgG

## Applications

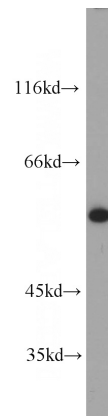
ELISA, WB, IF, IHC

## Dilutions

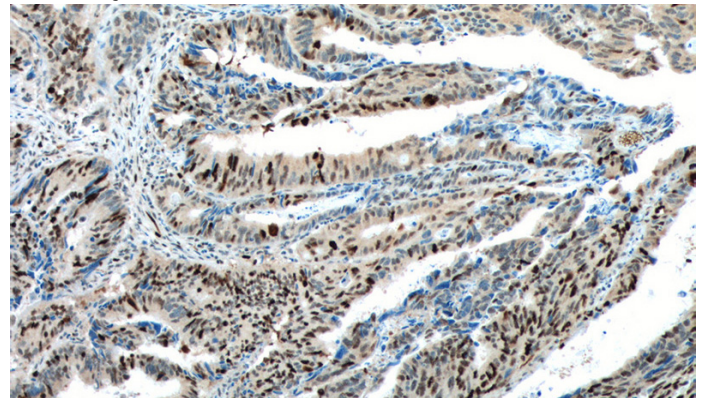
Recommended Dilution:

WB: 1:500-1:5000

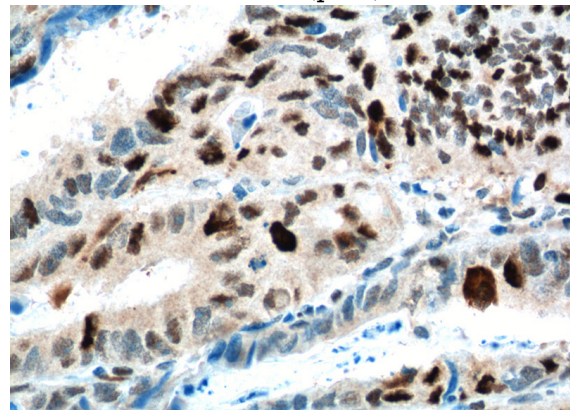
## Validations



HepG2 cells were subjected to SDS PAGE followed by western blot with Catalog No:112113(KPNA2 antibody) at dilution of 1:1000



Immunohistochemistry of paraffin-embedded human colon cancer tissue slide using Catalog No:112113(KPNA2 Antibody) at dilution of 1:200 (under 10x lens). heat mediated antigen retrieved with Tris-EDTA buffer(pH9).

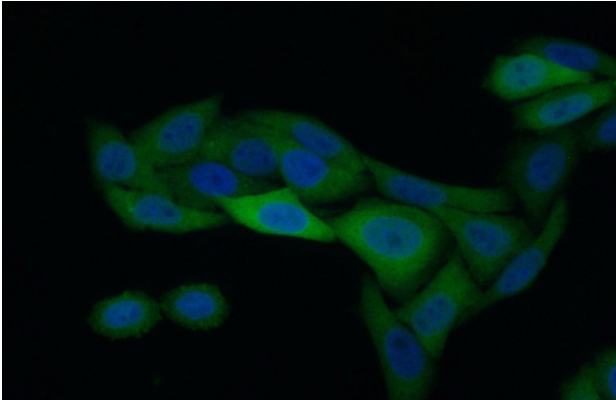


# KPNA2 antibody

Catalog Number: 112113

---

Immunohistochemistry of paraffin-embedded human colon cancer tissue slide using Catalog No:112113(KPNA2 Antibody) at dilution of 1:200 (under 40x lens). heat mediated antigen retrieved with Tris-EDTA buffer(pH9).



Immunofluorescent analysis of (10% Formaldehyde) fixed HepG2 cells using Catalog No:112113(KPNA2 Antibody) at dilution of 1:50 and Alexa Fluor 488-conjugated AffiniPure Goat Anti-Rabbit IgG(H+L)