

KLRF1 antibody



Catalog Number: 112110

Product name

KLRF1 antibody

Recommended Dilution:

WB: 1:200-1:2000

Immunogen

IHC: 1:20-1:200

[Human KLRF1 Recombinant protein \(GST tag\)](#)

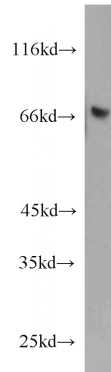
Validations

Specificity

Human; other species not tested.

Antibody description

KLRF1 Rabbit Polyclonal antibody. Positive IHC detected in human tonsillitis tissue. Positive WB detected in human spleen tissue, Y79 cells. Observed molecular weight by Western-blot: 68 kDa



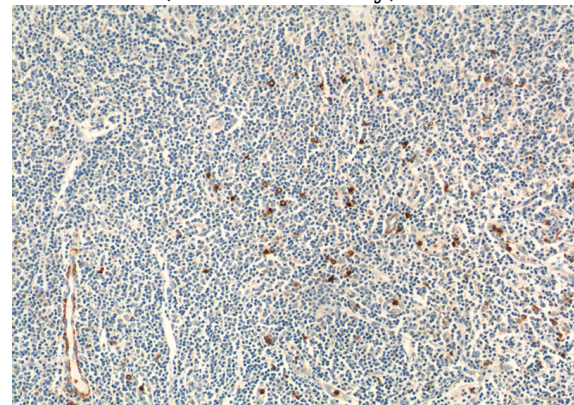
Preparation

This antibody was obtained by immunization of KLRF1 recombinant protein (Accession Number: BC098257). Purification method: Antigen affinity purified.

human spleen tissue were subjected to SDS PAGE followed by western blot with Catalog No:112110(KLRF1 antibody) at dilution of 1:500

Formulation

PBS with 0.1% sodium azide and 50% glycerol pH 7.3.



Storage

Store at -20°C. DO NOT ALIQUOT

Clonality

Polyclonal

Ig Type

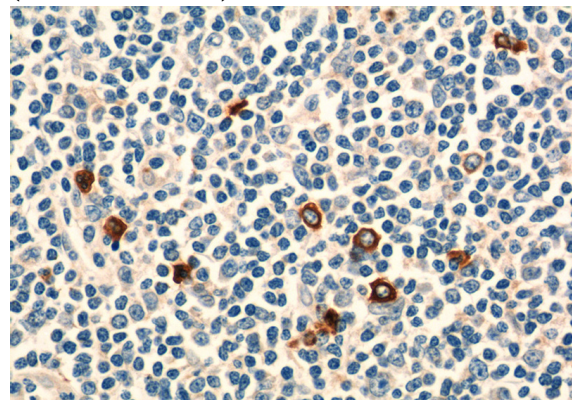
Rabbit IgG

Applications

ELISA, WB, IHC

Dilutions

Immunohistochemistry of paraffin-embedded human tonsillitis tissue slide using Catalog No:112110(KLRF1 Antibody) at dilution of 1:50 (under 10x lens)



KLRF1 antibody



Catalog Number: 112110

Immunohistochemistry of paraffin-embedded human tonsillitis tissue slide using Catalog

No:112110(KLRF1 Antibody) at dilution of 1:50 (under 40x lens)