

# KLHL32 antibody



Catalog Number: 112104

---

## Product name

KLHL32 antibody

## Specificity

human, mouse, rat; other species not tested.

## Antibody description

KLHL32 Rabbit Polyclonal antibody. Positive IF detected in Hela.

## Preparation

This antibody was obtained by immunization of KLHL32 recombinant protein (Accession Number: NM\_001286252). Purification method: Antigen affinity purified.

## Formulation

PBS with 0.02% sodium azide and 50% glycerol pH 7.3.

## Storage

Store at -20°C. DO NOT ALIQUOT

## Clonality

Polyclonal

## Ig Type

Rabbit IgG

## Applications

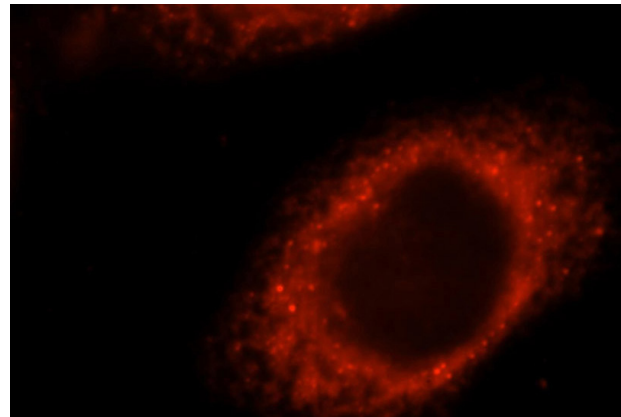
ELISA, IF

## Dilutions

Recommended Dilution:

IF: 1:10-1:100

## Validations



Immunofluorescent analysis of Hela cells, using KLHL32 antibody Catalog No:112104 at 1:25 dilution and Rhodamine-labeled goat anti-rabbit IgG (red).