

KLHL31 antibody



Catalog Number: 112103

Product name

KLHL31 antibody

Immunogen

[Human KLHL31 Recombinant protein \(His tag\)](#)

Specificity

Human, Mouse; other species not tested.

Antibody description

KLHL31 Rabbit Polyclonal antibody. Positive IF detected in HepG2 cells. Positive IHC detected in human skeletal muscle tissue, human colon cancer tissue, human heart tissue. Positive WB detected in mouse embryo tissue, Jurkat cells. Observed molecular weight by Western-blot: 60 kDa

Preparation

This antibody was obtained by immunization of KLHL31 recombinant protein (Accession Number: XM_017010858). Purification method: Antigen affinity purified.

Formulation

PBS with 0.1% sodium azide and 50% glycerol pH 7.3.

Storage

Store at -20°C. DO NOT ALIQUOT

Clonality

Polyclonal

Ig Type

Rabbit IgG

Applications

ELISA, WB, IHC, IF

Dilutions

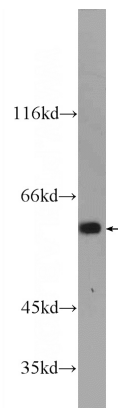
Recommended Dilution:

WB: 1:500-1:5000

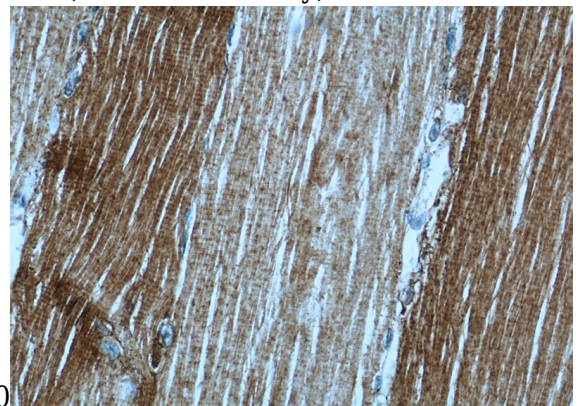
IHC: 1:20-1:200

IF: 1:20-1:200

Validations



mouse embryo tissue were subjected to SDS PAGE followed by western blot with Catalog No:112103(KLHL31 Antibody) at dilution of

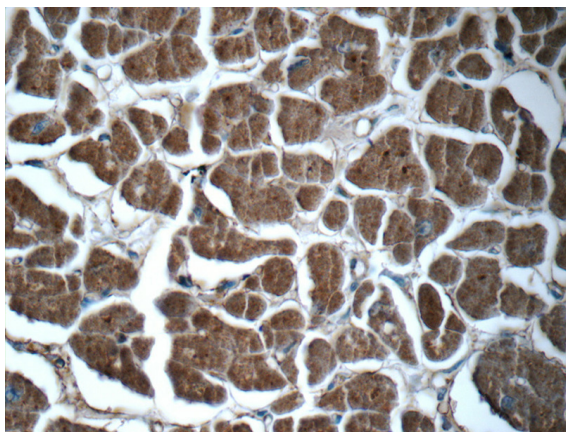


1:1000

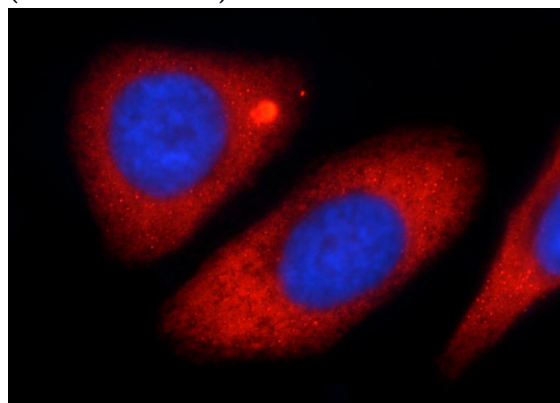
Immunohistochemistry of paraffin-embedded human skeletal muscle tissue slide using Catalog No:112103(KLHL31 Antibody) at dilution of 1:50 (under 40x lens)

KLHL31 antibody

Catalog Number: 112103



(under 40x lens)



Immunohistochemistry of paraffin-embedded human heart tissue slide using Catalog No:112103(KLHL31 Antibody) at dilution of 1:50

Immunofluorescent analysis of HepG2 cells using Catalog No:112103(KLHL31 Antibody) at dilution of 1:50 and Rhodamine-Goat anti-Rabbit IgG