

# KLHL28 antibody



Catalog Number: 112100

## Product name

KLHL28 antibody

## Specificity

Human, Mouse; other species not tested.

## Antibody description

KLHL28 Rabbit Polyclonal antibody. Positive WB detected in Jurkat cells, mouse brain tissue. Positive IHC detected in human colon tissue, human liver tissue. Observed molecular weight by Western-blot: 64 kDa

## Preparation

This antibody was obtained by immunization of KLHL28 recombinant protein (Accession Number: XM\_011536847). Purification method: Antigen affinity purified.

## Formulation

PBS with 0.1% sodium azide and 50% glycerol pH 7.3.

## Storage

Store at -20°C. DO NOT ALIQUOT

## Clonality

Polyclonal

## Ig Type

Rabbit IgG

## Applications

ELISA, WB, IHC

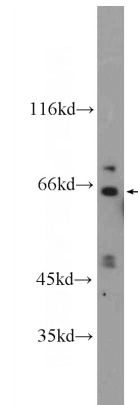
## Dilutions

Recommended Dilution:

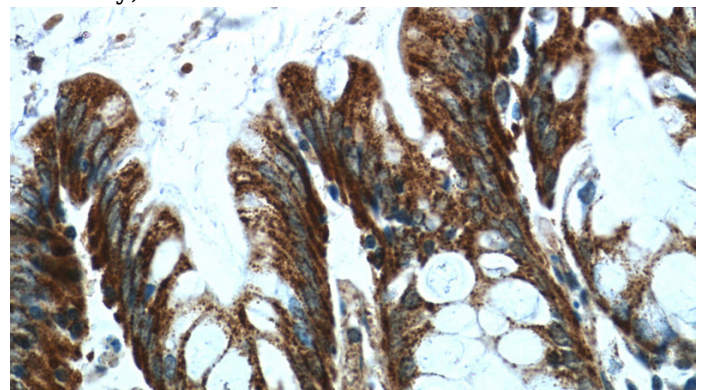
WB: 1:200-1:1000

IHC: 1:20-1:200

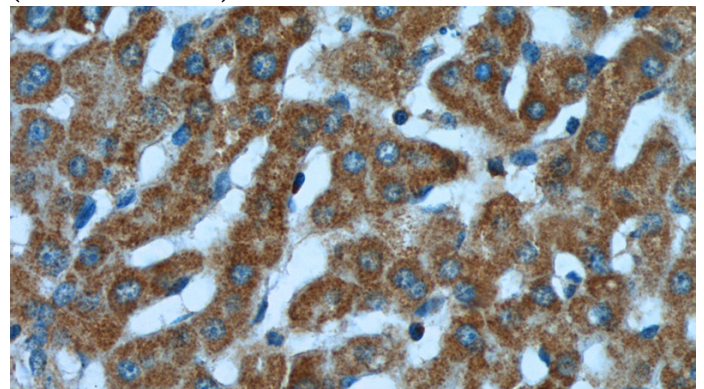
## Validations



Jurkat cells were subjected to SDS PAGE followed by western blot with Catalog No:112100(KLHL28 Antibody) at dilution of 1:300



Immunohistochemistry of paraffin-embedded human colon tissue slide using Catalog No:112100(KLHL28 Antibody) at dilution of 1:50 (under 40x lens)



Immunohistochemistry of paraffin-embedded human liver tissue slide using Catalog No:112100(KLHL28 Antibody) at dilution of 1:50

# KLHL28 antibody



Catalog Number: 112100

---

(under 40x lens)