

# KLHL22 antibody



Catalog Number: 112099

## Product name

KLHL22 antibody

## Specificity

Human, Mouse, Rat; other species not tested.

## Antibody description

KLHL22 Rabbit Polyclonal antibody. Positive WB detected in human brain tissue, mouse ovary tissue. Observed molecular weight by Western-blot: 72 kDa

## Preparation

This antibody was obtained by immunization of KLHL22 recombinant protein (Accession Number: NM\_032775). Purification method: Antigen affinity purified.

## Formulation

PBS with 0.02% sodium azide and 50% glycerol pH 7.3.

## Storage

Store at -20°C. DO NOT ALIQUOT

## Clonality

Polyclonal

## Ig Type

Rabbit IgG

## Applications

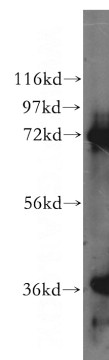
ELISA, WB

## Dilutions

Recommended Dilution:

WB: 1:500-1:5000

## Validations



human brain tissue were subjected to SDS PAGE followed by western blot with Catalog No:112099(KLHL22 antibody) at dilution of 1:300