

KLHL21 antibody

Catalog Number: 112098

Product name

KLHL21 antibody

IP: 1:200-1:1000

IHC: 1:20-1:200

Specificity

Human, Mouse, Rat; other species not tested.

Antibody description

KLHL21 Rabbit Polyclonal antibody. Positive IP detected in HeLa cells. Positive WB detected in A431 cells, HeLa cells. Positive IHC detected in human brain tissue, human liver cancer tissue. Observed molecular weight by Western-blot: 67kd

Preparation

This antibody was obtained by immunization of KLHL21 recombinant protein (Accession Number: NM_014851). Purification method: Antigen affinity purified.

Formulation

PBS with 0.02% sodium azide and 50% glycerol pH 7.3.

Storage

Store at -20°C. DO NOT ALIQUOT

Clonality

Polyclonal

Ig Type

Rabbit IgG

Applications

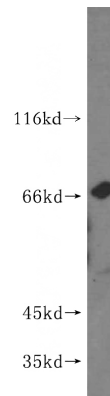
ELISA, WB, IHC, IP


Dilutions

Recommended Dilution:

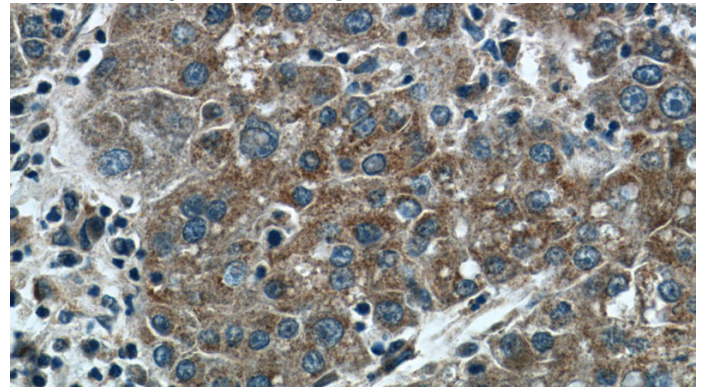
WB: 1:200-1:2000

Validations



A431 cells were subjected to SDS PAGE followed by western blot with Catalog No:112098(KLHL21 antibody) at dilution of 1:400 

IP Result of anti-KLHL21 (IP:Catalog No:112098, 3ug; Detection:Catalog No:112098 1:300) with HeLa cells lysate 1800ug.

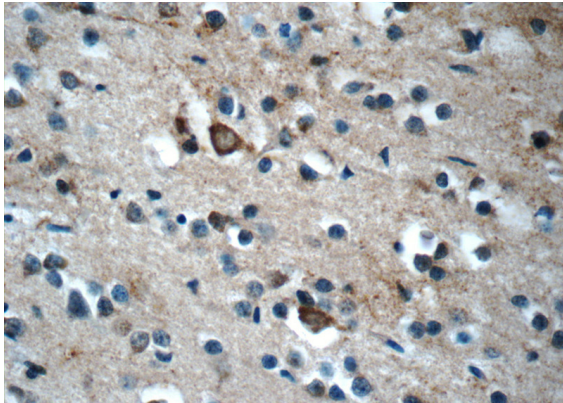


Immunohistochemistry of paraffin-embedded human liver cancer tissue slide using Catalog No:112098(KLHL21 Antibody) at dilution of 1:50 (under 40x lens)

KLHL21 antibody



Catalog Number: 112098



Immunohistochemistry of paraffin-embedded human brain tissue slide using Catalog No:112098(KLHL21 Antibody) at dilution of 1:50 (under 40x lens)