

KLHL10 antibody



Catalog Number: 112088

Product name

KLHL10 antibody

Specificity

Human, Mouse, Rat; other species not tested.

Antibody description

KLHL10 Rabbit Polyclonal antibody. Positive WB detected in mouse testis tissue, rat testis tissue. Observed molecular weight by Western-blot: 65-70 kDa

Preparation

This antibody was obtained by immunization of KLHL10 recombinant protein (Accession Number: BC067753). Purification method: Antigen affinity purified.

Formulation

PBS with 0.1% sodium azide and 50% glycerol pH 7.3.

Storage

Store at -20°C. DO NOT ALIQUOT

Clonality

Polyclonal

Ig Type

Rabbit IgG

Applications

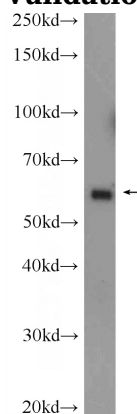
ELISA, WB

Dilutions

Recommended Dilution:

WB: 1:500-1:5000

Validations



mouse testis tissue were subjected to SDS PAGE followed by western blot with Catalog No:112088(KLHL10 Antibody) at dilution of 1:1000