

KLF5 antibody



Catalog Number: 112082

Product name

KLF5 antibody

WB: 1:500-1:5000

IP: 1:200-1:2000

Specificity

Human, Mouse, Rat; other species not tested.

IF: 1:50-1:500

Antibody description

KLF5 Rabbit Polyclonal antibody. Positive IF detected in HeLa cells. Positive IP detected in HeLa cells. Positive WB detected in HeLa cells, A549 cells, HT-1080 cells, human testis tissue, mouse colon tissue, mouse small intestine tissue, PC-3 cells. Observed molecular weight by Western-blot: 50-60 kDa

Preparation

This antibody was obtained by immunization of KLF5 recombinant protein (Accession Number: NM_001730). Purification method: Antigen affinity purified.

Formulation

PBS with 0.02% sodium azide and 50% glycerol pH 7.3.

Storage

Store at -20°C. DO NOT ALIQUOT

Clonality

Polyclonal

Ig Type

Rabbit IgG

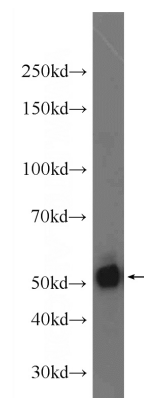
Applications

ELISA, IP, IF, WB

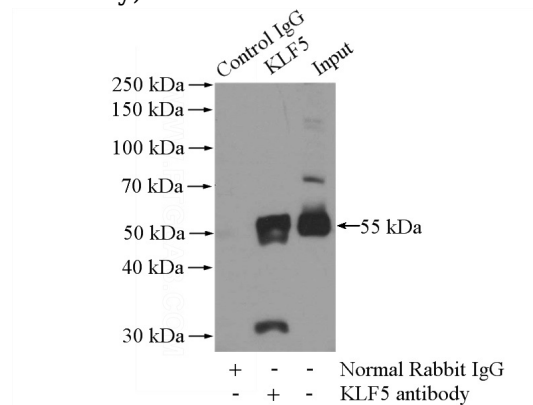
Dilutions

Recommended Dilution:

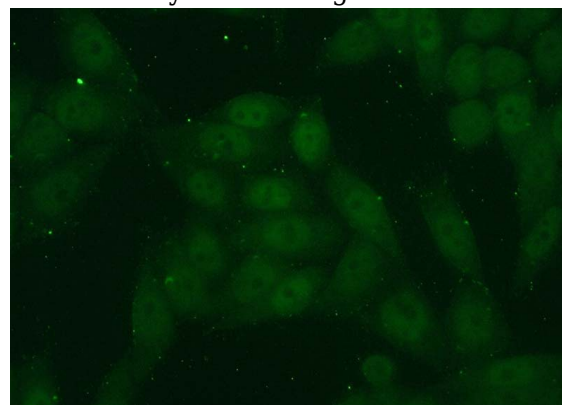
Validations



HeLa cells were subjected to SDS PAGE followed by western blot with Catalog No:112082(KLF5 Antibody) at dilution of 1:1000



IP Result of anti-KLF5 (IP:Catalog No:112082, 4ug; Detection:Catalog No:112082 1:500) with HeLa cells lysate 2800ug.



KLF5 antibody



Catalog Number: 112082

Immunofluorescent analysis of (10% Formaldehyde) fixed HeLa cells using Catalog No:112082(KLF5 Antibody) at dilution of 1:50 and

Alexa Fluor 488-conjugated AffiniPure Goat Anti-Rabbit IgG(H+L)