

KLF10 antibody



Catalog Number: 112076

Product name

KLF10 antibody

IP: 1:200-1:1000

IF: 1:20-1:200

Specificity

Human; other species not tested.

Antibody description

KLF10 Rabbit Polyclonal antibody. Positive IF detected in HeLa cells. Positive WB detected in HeLa cells, Jurkat cells. Positive IP detected in Jurkat cells. Observed molecular weight by Western-blot: 52 kDa

Preparation

This antibody was obtained by immunization of KLF10 recombinant protein (Accession Number: NM_001032282). Purification method: Antigen affinity purified.

Formulation

PBS with 0.1% sodium azide and 50% glycerol pH 7.3.

Storage

Store at -20°C. DO NOT ALIQUOT

Clonality

Polyclonal

Ig Type

Rabbit IgG

Applications

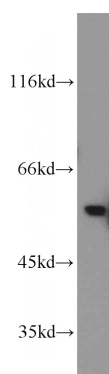
ELISA, WB, IF, IP

Dilutions

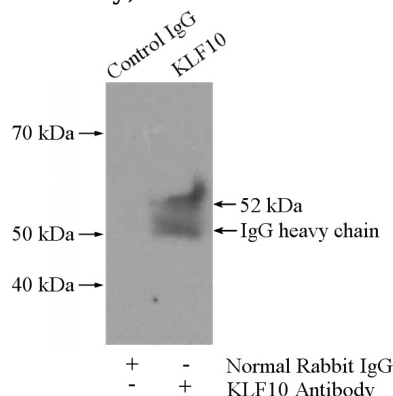
Recommended Dilution:

WB: 1:200-1:1000

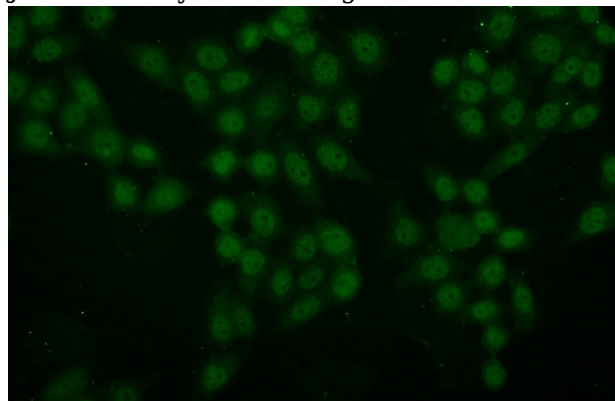
Validations



HeLa cells were subjected to SDS PAGE followed by western blot with Catalog No:112076(KLF10 antibody) at dilution of 1:100



IP Result of anti-KLF10 (IP:Catalog No:112076, 4ug; Detection:Catalog No:112076 1:300) with Jurkat cells lysate 2800ug.



Immunofluorescent analysis of HeLa cells using Catalog No:112076(KLF10 Antibody) at dilution of

KLF10 antibody



Catalog Number: 112076

1:50 and Alexa Fluor 488-conjugated AffiniPure

Goat Anti-Rabbit IgG(H+L)