

# KLC2 antibody

Catalog Number: 112074

## Product name

KLC2 antibody

IP: 1:200-1:2000

IHC: 1:20-1:200

## Specificity

Human, Mouse, Rat; other species not tested.

## Antibody description

KLC2 Rabbit Polyclonal antibody. Positive IHC detected in human brain tissue. Positive IP detected in mouse testis tissue. Positive WB detected in mouse testis tissue, mouse lung tissue. Observed molecular weight by Western-blot: 67 kDa

## Preparation

This antibody was obtained by immunization of KLC2 recombinant protein (Accession Number: NM\_022822). Purification method: Antigen affinity purified.

## Formulation

PBS with 0.02% sodium azide and 50% glycerol pH 7.3.

## Storage

Store at -20°C. DO NOT ALIQUOT

## Clonality

Polyclonal

## Ig Type

Rabbit IgG

## Applications

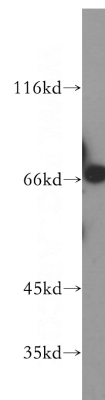
ELISA, WB, IHC, IP

## Dilutions

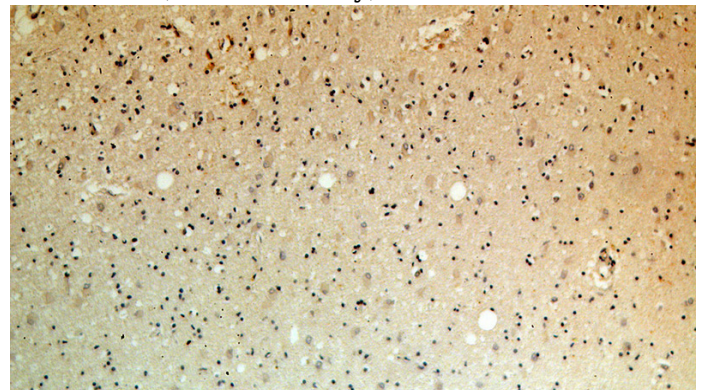
Recommended Dilution:

WB: 1:1000-1:10000

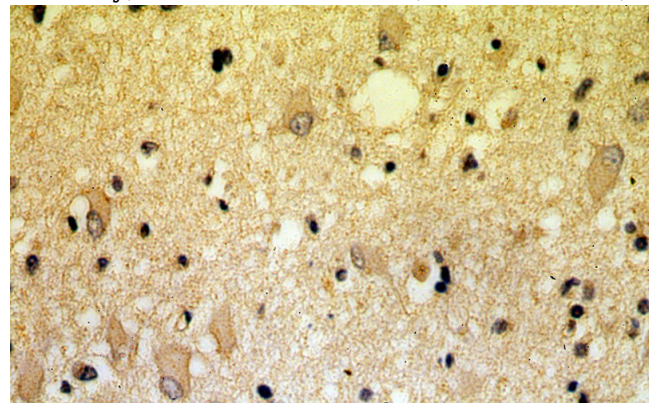
## Validations



mouse testis tissue were subjected to SDS PAGE followed by western blot with Catalog No:112074(KLC2 antibody) at dilution of 1:800



Immunohistochemical of paraffin-embedded human brain using Catalog No:112074(KLC2 antibody) at dilution of 1:100 (under 10x lens)



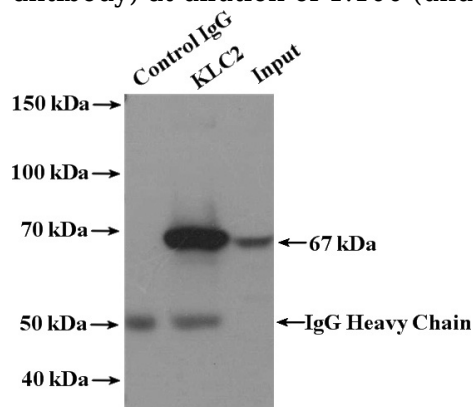
Immunohistochemical of paraffin-embedded human brain using Catalog No:112074(KLC2

# KLC2 antibody

Catalog Number: 112074

---

antibody) at dilution of 1:100 (under 40x lens)



IP Result of anti-KLC2 (IP:Catalog No:112074, 4ug; Detection:Catalog No:112074 1:800) with mouse testis tissue lysate 4400ug.