

KIRREL2 antibody



Catalog Number: 112069

Product name

KIRREL2 antibody

Specificity

Human,Mouse,Rat; other species not tested.

Antibody description

KIRREL2 Rabbit Polyclonal antibody. Positive WB detected in mouse liver tissue, Transfected HEK-293 cells. Observed molecular weight by Western-blot: 67 kDa, 90 kDa

Preparation

This antibody was obtained by immunization of KIRREL2 recombinant protein (Accession Number: BC007312). Purification method: Antigen affinity purified.

Formulation

PBS with 0.1% sodium azide and 50% glycerol pH 7.3.

Storage

Store at -20°C. DO NOT ALIQUOT

Clonality

Polyclonal

Ig Type

Rabbit IgG

Applications

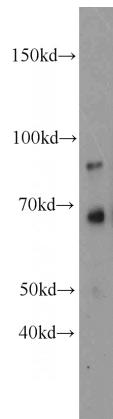
ELISA, WB

Dilutions

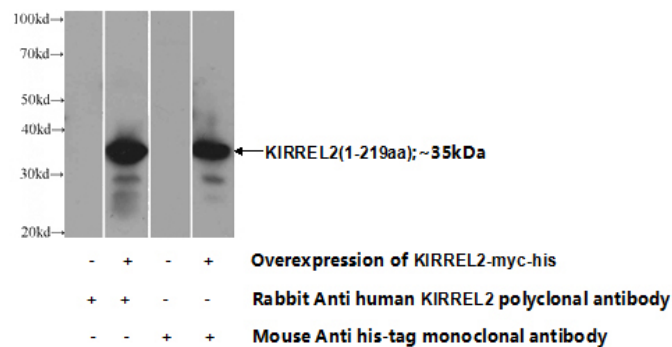
Recommended Dilution:

WB: 1:200-1:1000

Validations



mouse liver tissue were subjected to SDS PAGE followed by western blot with Catalog No:112069(KIRREL2 antibody) at dilution of 1:300



Transfected HEK-293 cells were subjected to SDS PAGE followed by western blot with Catalog No:112069(KIRREL2 Antibody) at dilution of 1:1000